



James D. O'Reilly
Chief Facilities Executive
Los Angeles Community College District

Design Build Institute of America (Los Angeles)

BuildLACCD Program Overview

October 20, 2016



BuildLACCD
Building for tomorrow's leaders



LACCD Overview

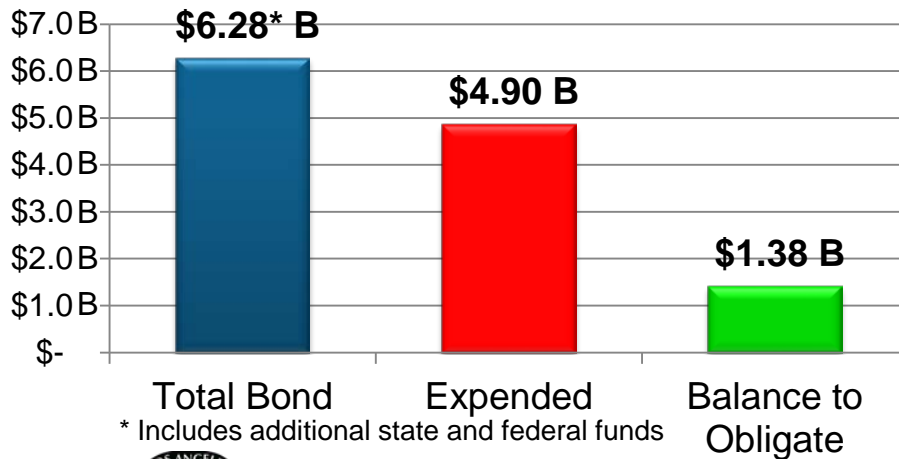
- Established in 1969
- Governed by seven-member Board of Trustees
- Nation's largest community college district
- Encompasses 36 cities within 882 square miles
- Nine college campuses and two satellite campuses serve more than 135,000 students
- Build-LACCD managed by Program Management Office (PMO)



Bond Program Overview

Bond Measure	Year and Amount	Essential Purpose
Proposition A	<u>2001</u> \$1.245 billion	To repair, rehabilitate, modernize, and construct new facilities at all nine colleges.
Proposition AA	<u>2003</u> \$908 million	To repair, rehabilitate, modernize, and construct new facilities at all nine colleges.
Measure J	<u>2008</u> \$3.5 billion	To further the colleges' master plans, land acquisitions and the buyout of energy contracts. "J is for Jobs"

Bond Fund Balance (As of September 2016)



**Nearly 600 projects
completed
to-date**



BuildLACCD
Building for tomorrow's leaders

LSEDV Contract Award Breakdown

LSEDV : Local, Small, Emerging, Disabled Veteran-Owned

As of June 2016

Contract Category	Total Firms	LSEDV Firms	LSEDV Firms with Task Orders	Non-LSEDV Firms with Task Orders
Staff Augmentation	180	126	35	14
Architecture/Engineering	19	8	6	9
Environmental	12	6	6	6
Inspector of Record	18	13	7	4
Laboratory of Record	9	5	5	4
Whole Bldg. Commissioning	11	3	2	5
Professional Services	249	161	61	42
Construction Companies	51	20	N/A	N/A

300
Total
Companies

181
LSEDV
Companies

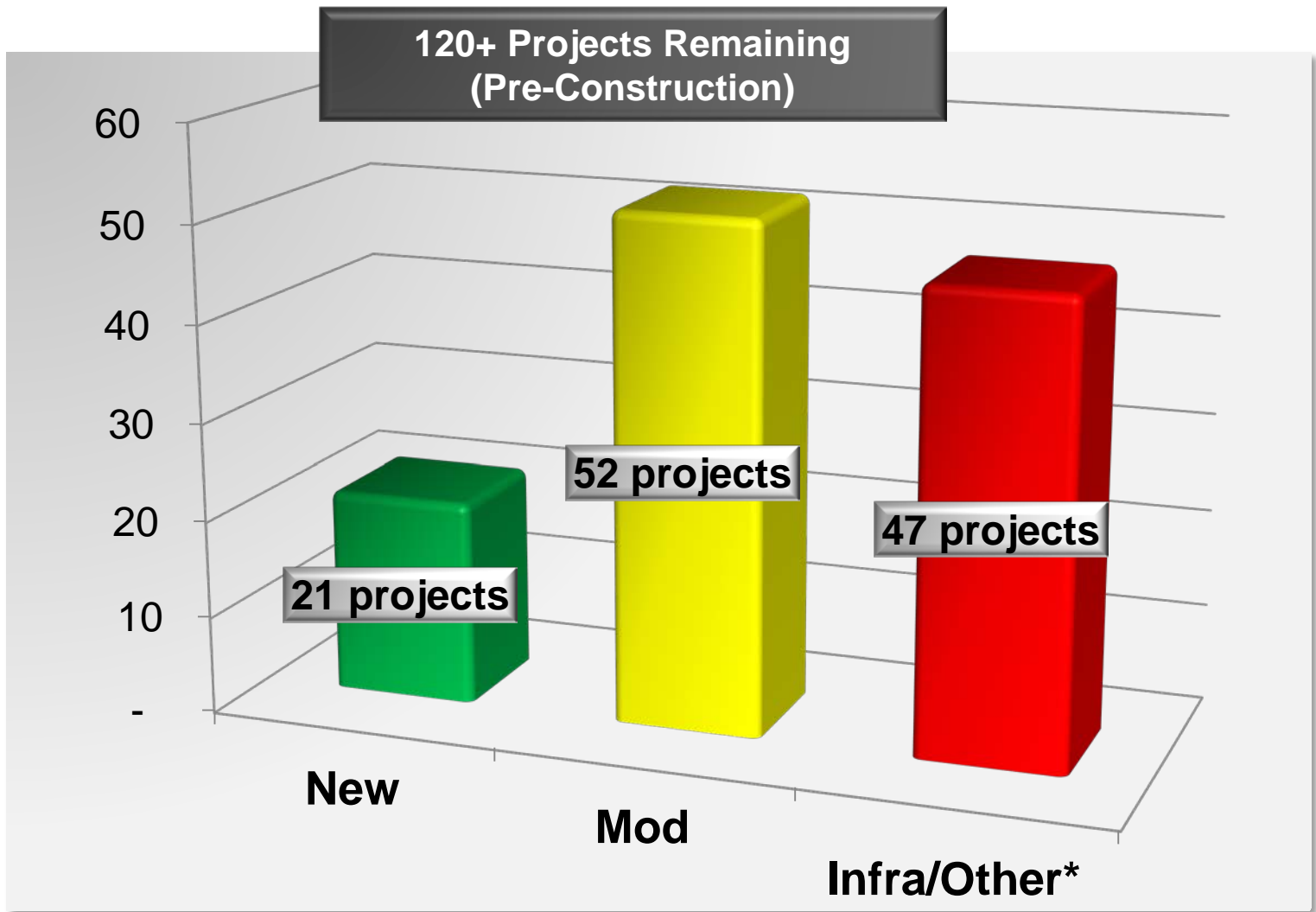
60%
Task Orders
awarded to
LSEDV



Program Partners



College Projects Remaining



*Other includes demo, landscape/hardscape, parking, P.E. fields, roadways/street, stormwater, etc.



Current and Upcoming Opportunities (120 Days)

Project	Award Date	Value (\$M)
LAVC Campus Center Upgrade	Q1 2017	\$3.5
ELAC Southgate Demo & D-B <i>Detail</i>	Q4 2016	\$81.0
PC M&O Demolition	Q4 2016	\$1.1
LACC Demo Men's Gym	Q4 2016	\$0.9
LACC Transportation and Accessibility Phase 1	Q2 2017	\$2.3
LATTC Art and Culinary Arts Building <i>Detail</i>	Q4 2016	\$52.0
WLAC Technology Learning Center 2	Q4 2016	\$18.5
\$159.3 M in Subconsultant Opportunities		
LACC Security and Landscape	Q1 2017	\$6.0
WLAC Watson Center <i>Detail</i>	Q1 2017	\$9.1
LATTC Campus Improvements Package	Q1 2017	\$14.4
LAPC Expanded Automotive Technology <i>Detail</i>	Q1 2017	\$24.0
LAPC Parking Lot/Road Ways & Storm Water	Q4 2017	\$6.8
\$60 M in Prime & Subconsultant Opportunities		

Professional Services

Services	Estimated Dates
Geo Tech Bench	RFQ's are due ~ Q4 2016/Q1 2017
As-Needed Project Specific Design Services	Register online at planetbids.com



East Los Angeles College South Gate Educational Center



Shortlist Primes

Harper Construction Company, Inc.
Chris Marble, Vice President
(619) 233-7900
cmarble@harperconstruction.com

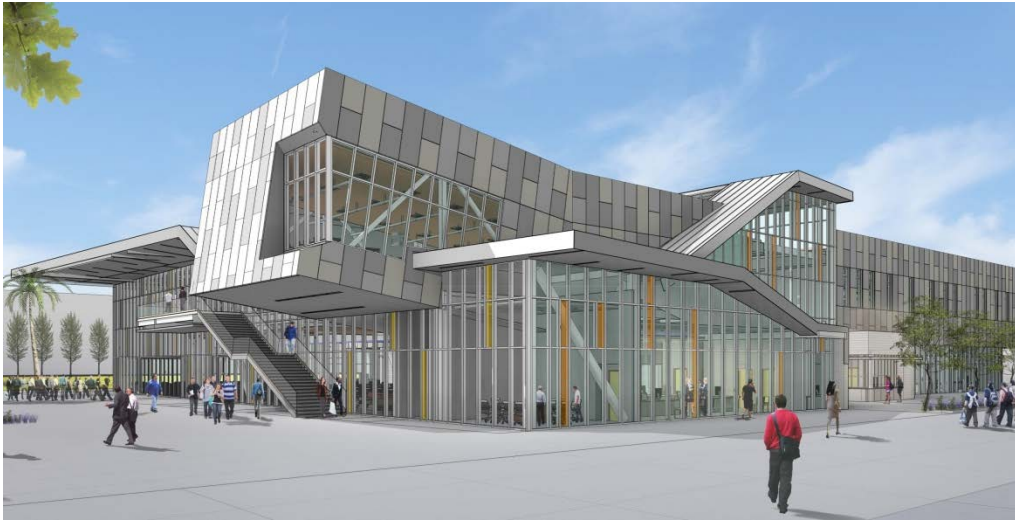
Pinner Construction Company
Justin Davis, Vice President
(714) 490-4000
JustinD@pinnerconstruction.com

Swinerton Builders
Dave Callis, Vice President, Division Manager
(213) 896-3400
dcallis@swinerton.com

Design Builder: **TBD**
Project Budget: \$81M
Delivery Type: Design Build
Project Type: Demolition/New Construction



Los Angeles Trade Technical College Art and Culinary Arts Building



Construction Budget: \$51 Million
Delivery Type: Design Build
Awarded Firm: Harper
Expected Construction Commencement (Notice to Proceed): Dec 2017



BuildLACCD
Building for tomorrow's leaders

West Los Angeles College Watson Center (*Design Bid Build*)



Watson Center 2

Construction Budget: \$ 9.1 M
 Delivery Type: Design Bid Build
 Project Type: New Construction

Pre-Qual	November 2016
Shortlist	December 2016
NOITA	February 2017



Los Angeles Pierce College Automotive & New Technical Education Facilities



Automotive & New Technical Education Facility

Project Type: New Construction
 Delivery Type: Design Build
 Project Budget: \$24M

Pre-Qual	October 2016
Shortlist	December 2016
NOITA	March 2017



BuildLACCD
 Building for tomorrow's leaders

Los Angeles City College

Cesar Chavez Admin Modernization (*Design Bid Build*)



Cesar Chavez Administration Building

Construction Budget: \$ 17.2 M
Delivery Type: Design Bid Build
Project Type: Renovation

Pre-Qual	Q2 2017
Shortlist	Q3 2017
NOITA	Q3/Q4 2017



BuildLACCD
Building for tomorrow's leaders

Los Angeles Southwest College School of Math + Science

Design Phase Completion: **Nov. 2016**

Projected DSA Permit: **Sep. 2017**

Construction Substantial Completion: **Dec. 2018**

Close-Out Phase Completion: **Jan. 2019**

Spring Quarter **Feb. 2019**

School of Math + Science

Programming Architect: Sillman Wright

Awarded Contractor: Harper

Construction Budget: \$ 44.5M

Delivery Type: Design Build

Project Type: New Construction





MATOC Staffing Opportunities



BuildLACCD
Building for tomorrow's leaders

MATOC Open Season

- Important Dates:

- November 1, 2016 through December 2, 2016
- Sub Consultants can be added to Staff Augmentation Contracts.

- Action Required

- Subconsultants contact MATOC primes



MATOC Contract Requirements

- Applicable to ALL contracts
 - DOJ Employee Background Check
 - Task Order Performance Evaluations
 - Elimination of 1099/Single Employee Proprietorships
 - Other Admin Revisions

Contract Requirements for Approval of ALL Subs

- Register on Planet Bids
- Business License or Proof of Registration (with the Secretary of State of California)
- Sub Consultant Questionnaire Form
- Insurance Certificate
- W9
- Policy on Retention of Staff



MATOC Primes



Consultant Name	Project Representative	Telephone	Email
Arcadis U.S., Inc.	Mr. Girish Kripalani	(714) 508-2610	Girish.Kripalani@arcadis-us.com
Cordoba Corp.	Mr. Michael Boomsma	(562) 938-5074	mboomsma@cordobacorp.com
Cumming Construction Management, Inc.	Mr. Anthony Sanchez	(323) 855-4710	asanchez@ccorpusa.com
Hill International, Inc.	Mr. John Skoury	(949) 474-2908	johnskoury@hillintl.com
Jacobs Project Management Co.	Mr. Robert Brykalski	(213) 239-1300	Robert.Brykalski@jacobs.com
Rachlin Architects Inc.	Mr. Michael Rachlin	(310) 204-3400	fsisa@rachlinpartners.com
STV Construction, Inc.	Mr. Sam Yu	(213) 482-9444	Sam.Yu@stvinc.com
Vanir Construction Management Inc.	Mr. Randy Britt	(213) 627-7371	randy.britt@vanir.com
Yang Management, Inc.	Mr. Hau-Wen Feng	(818) 841-8888	hau-wen.feng@yminc.net





Bond Program Information Online



BuildLACCD
Building for tomorrow's leaders

www.buildlaccd.org

Select Language Contact Us

BuildLACCD ABOUT COLLEGES MEDIA ROOM REPORTS EVENTS OVERSIGHT LABOR & CED **CONTRACTORS & BIDDERS**

Home
Project Resources
Forms & Templates
Standards & Guidelines

LASC - School of Career and Technical Education
[View Project](#)
The new 48K SF facility houses the School of Business, Workforce Development, a new Career Resource Center, a new Environmental and Technology Science Program.

Discover Our 9 Colleges
EXPLORE THE MAP

Program Facts

- \$6.26 Billion total
- \$1.00 Billion to obligate
- 614 Projects completed
- 200+ Projects remaining
- 3 Bond measures
- 9 Colleges
- 250,000 students annually

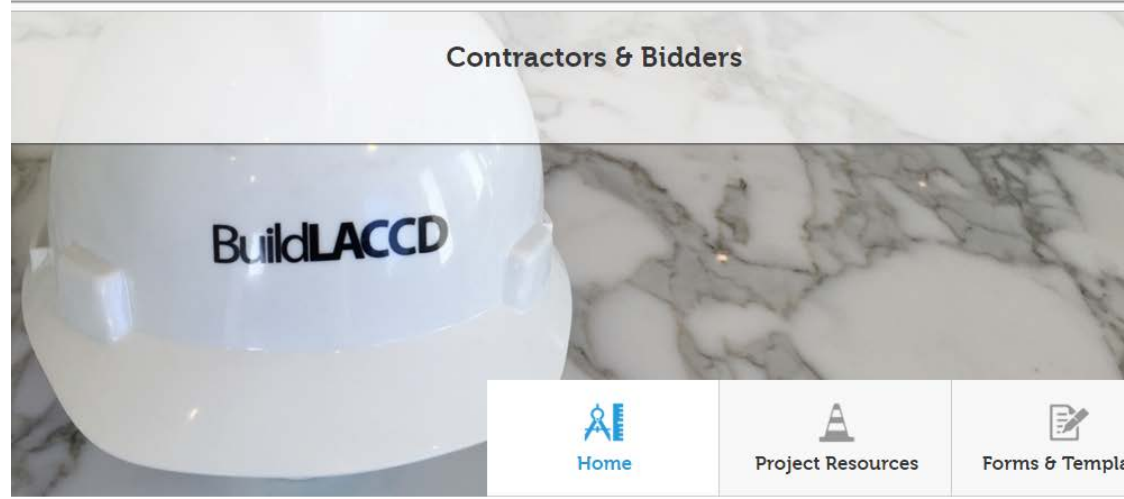
614 Projects Completed
\$4.87 billion Expended
\$1 billion To be contracted
\$5.26 billion Contracted

Interested in Doing Business with LACCD?

Register with [PlanetBids](#) to view and download bid documents.

PLANETBIDS





Contractors & Bidders

Home

Welcome to the BuildLACCD page for Contractors.

Home

Project Resources

Forms & Templates

Standards & Guidelines

Welcome to the BuildLACCD Page for Contractors

This page details current and upcoming projects including and not limited to:

- 1) Requests for Bid
- 2) Requests for Qualifications
- 3) Request for Proposals and
- 4) Task Order Bidding

Register your firm on PlanetBids by selecting the North American Industry Classification System (NAICS) code that most accurately defines your firm's business and your firm will receive automatic notifications when projects are planning or posted.

This section of the website is also intended to be a resource for existing vendors and consultants on the BuildLACCD Building Program. This section includes; forms & templates, design standards and many other valuable resources for your use.

Register on:



BuildLACCD

Building for tomorrow's leaders

PlanetBids Vendor Portal



Los Angeles Community College District **VENDOR PORTAL**



New Vendor Registration

Create a new vendor record.
If you wish to view or edit an existing vendor, simply Log In with your User Name and Password.



Bid Opportunities

Search for bid opportunities with this agency, download documents, become a prospective bidder, and electronically bid on projects.



My Contracts

UNAVAILABLE

Manage your awarded contracts, record payments, add subcontractors, produce reports and charts.



Certified Vendors

UNAVAILABLE

Find Certified Vendors.



Contracts

UNAVAILABLE

View public information regarding agency contracts.



News & Events

- Update Vendor Profile 2nd Request by Friday June 20, 2014
- LACCD \$6.2B BOND PROGRAM UPDATE AND



PLANETBIDS

<http://www.planetbids.com/portal/portal.cfm?CompanyID=21372>



BuildLACCD
Building for tomorrow's leaders



For more information

www.buildlaccd.org



BuildLACCD
Building for tomorrow's leaders



Measure **CC**

LOS ANGELES COMMUNITY COLLEGE DISTRICT AFFORDABLE EDUCATION/ JOB TRAINING/ CLASSROOM SAFETY MEASURE.

Measure CC will allow LACCD to issue \$3,300,000,000 in bonds to:

- Repair local community colleges
- Remove lead paint/ asbestos
- Upgrade campus safety/ security systems, technology
- Upgrade handicapped accessibility/earthquake safety
- Repair deteriorating gas, water/ sewer lines
- Acquire, construct, repair facilities, sites/ equipment



BuildLACCD
Building for tomorrow's leaders

Measure CC

LOS ANGELES COMMUNITY COLLEGE DISTRICT AFFORDABLE EDUCATION/ JOB TRAINING/ CLASSROOM SAFETY MEASURE.

- ~80% of respondents stated they would vote for an LACCD Bond if the election were held today (July).
- 80% of were women and 79% were men
- 89% were Democrats.
- 88% were voters of color



****Bond had high support with Independents @ 77% and slightly under the threshold needed for passage with Republicans @ 54% (55% needed to pass).**





Thank You



BuildLACCD
Building for tomorrow's leaders