

Los Angeles World Airports Capital Improvement Program

BUILDING A BETTER LAX

DESIGN-BUILD INSTITUTE OF AMERICA
Western Pacific Region
Thursday, September 5th, 2024
5:00pm – 8:00pm



LAWA | **LAX VNY**

MULTI-BILLION CAPITAL IMPROVEMENT PROGRAM



LAWA has the industry's largest and most complex Capital Improvement Program

Major Completed or In-Service Projects

- West Gates at TBIT
- LAX Economy Parking
- Consolidated Rental Car Facility*
- Airport Police Facility
- Modernization of Terminals 1, 2/3*, 6*, 7 and 8
- Smart Parking
- Terminal Vertical Cores*
- Terminal 1.5 Program
- Taxiway D Extension (to Taxiway A)*

Major Projects Currently in Construction

- Automated People Mover
- Modernization of Terminals 4 and 5
- Power Receiving Station
- North Airfield Exit Taxiways
- South Extension to West Gates at Tom Bradley International Terminal

Planning or Design

- Reconfigured Roadway Entrances to LAX Central Terminal Area
- VNY Taxiways Program
- Auxiliary Curbs Program
- Wayfinding Enhancement
- Asset Renewal Program

*denotes projects that have achieved substantial completion in the past 12 months.



LAX's New Arrival and Departure Sequence





Automated People Mover

- Length: 2.25-mile elevated guideway
- Six Stations: Three outside the Central Terminal Area and three inside
- Ride Duration: 10 minutes end to end
- Frequency of Trains: Every 2 minutes during peak hours
- Operates 24/7; 365 days
- **Anticipated Operation Start: Early 2026**



CONRAC

- LEED Gold Accredited Facility
- 6.4M sf with capacity for ~18,000 rental vehicles
- On-premise APM station eliminates + 3,200 daily shuttle trips to / from CTA
- 8400 MWh solar power PV system
- 3700 employee parking spots with over 230 EV charging and 140 EV ready spots
- **Completed: in March 2024**



CONRAC Photos



ConRAC from Concourse Way



Aerial view of ConRAC



ConRAC Customer Service Area



ConRAC on Concourse Way
(viewed from under APM guideway)



Midfield Satellite Concourse (MSC) South



- An extension to West Gates at TBIT
- The MSC South is a domestic concourse designed to serve around 100 to 220 passengers per gate
- Employ New Construction Technology that will result in construction time savings
- Off-Site Construction and Relocate (OCR) and AOA Site
- Completion: End of 2025



MSC-S Scope of Work



- Approximately 150,000sf total
- 2 stories (No basement)
- 9 Building segments at OCR
- The key architectural feature - the “brise-soleil” façade

• Pre-move

- Apron Work
- Building Segments – Structure, MEP/F and finishes

• Post Move

- Apron Floor fit-out
- Passenger Boarding Bridges (PBB)
- Finishes
- Commissioning

LOS ANGELES WORLD AIRPORTS

LAWA | LAX VNY



Offsite Construction & Relocation (OCR) Method



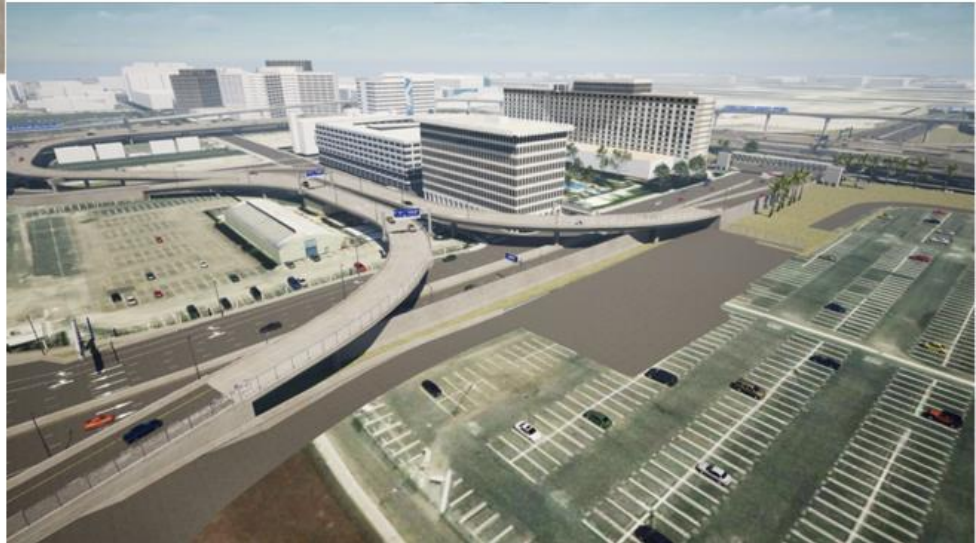
- Steel structure modular building design
- Constructed in nine segments
- 9 segments currently constructed at an off-site construction yard at the northwestern area of the campus.
- Segments are to be transported to the project's final site location south of West Gates at TBIT in the middle of the airfield.
- Scheduled Move:
 - Start: October 2024
 - Complete: November 2024





ATMP Roadway Improvements

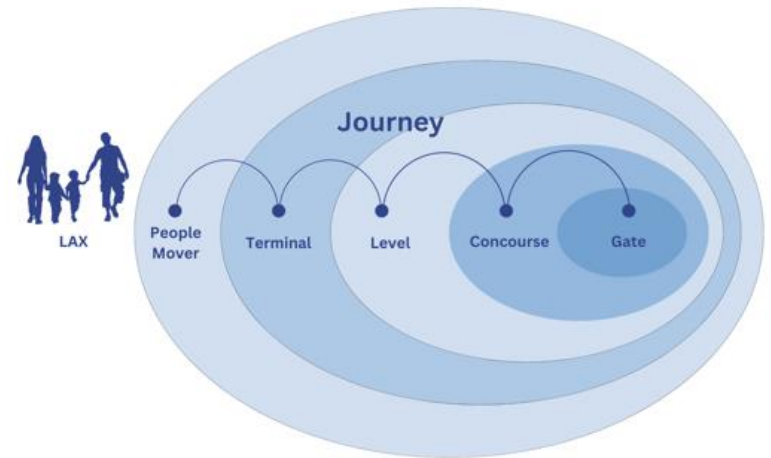
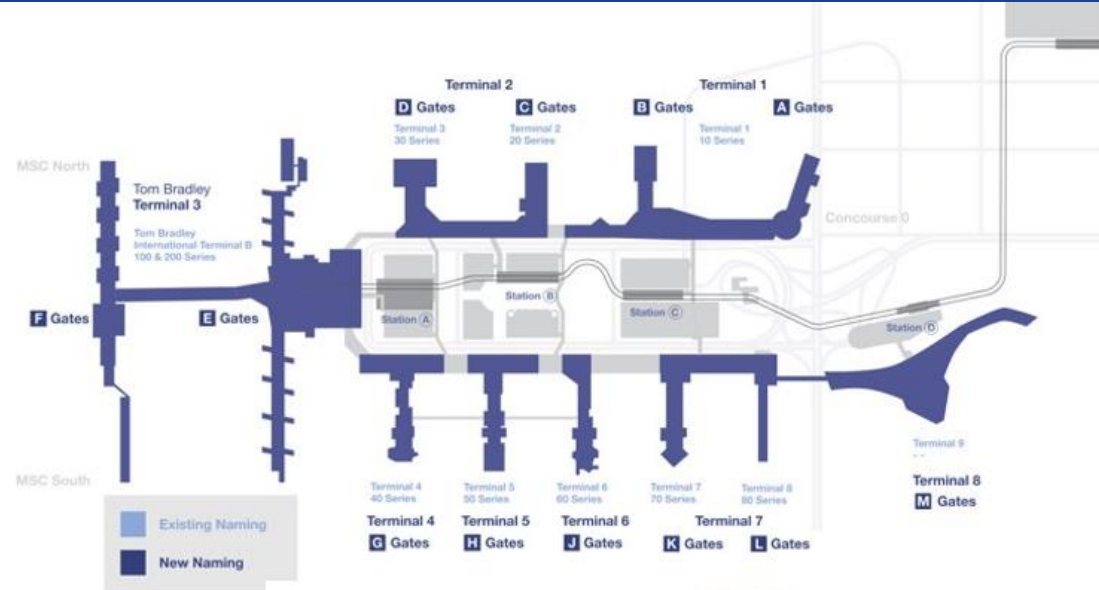
- Reconfiguration of vehicle access to CTA to reduce congestion and impact on surrounding streets
- Improves access to Economy Parking structure and APM stations
- Currently in design
- **Anticipated Completion:** Majority of Project Scope Before the 2028 Olympics



Wayfinding

Overview

- Comprehensive new signage & wayfinding improvements throughout LAX, thereby creating an intuitive guest experience navigating to & through the LAX Campus.
- Includes all facets of the journey:
 - Virtual gateways
 - APM and associated facilities
 - Roadways
 - Parking
 - Curbside
 - Terminals
 - Concessions
 - Gates
- Includes the development of an airport-wide implementation and prioritization plan for all signage upgrades



Phased Completion: Mid-2027
(before the 2028 Olympics)





THANK YOU!

LAWA | **LAX VNY**

