



# design – build at UCDAVIS

Design-Build Institute of America – WPR  
February 23, 2012 Luncheon



# UCDAVIS

DESIGN AND CONSTRUCTION MANAGEMENT





## design – build at UCDAVIS

- how UCD views design-build as a delivery method
- successes and challenges of using design-build on the campus
- how UCD determines what projects will be considered for design-build
- future volume of design-build work at UCD in the next 5 years



# Segundo North

TEAM: Walsh & Forster Inc /Master Architect: Mogavero Notestine Associates

METHODOLOGY: Bridging documents

COST: \$22 million

FEATURES: dormitory: 370 new beds, lounges, laundry facilities, study rooms





# Giedt Hall

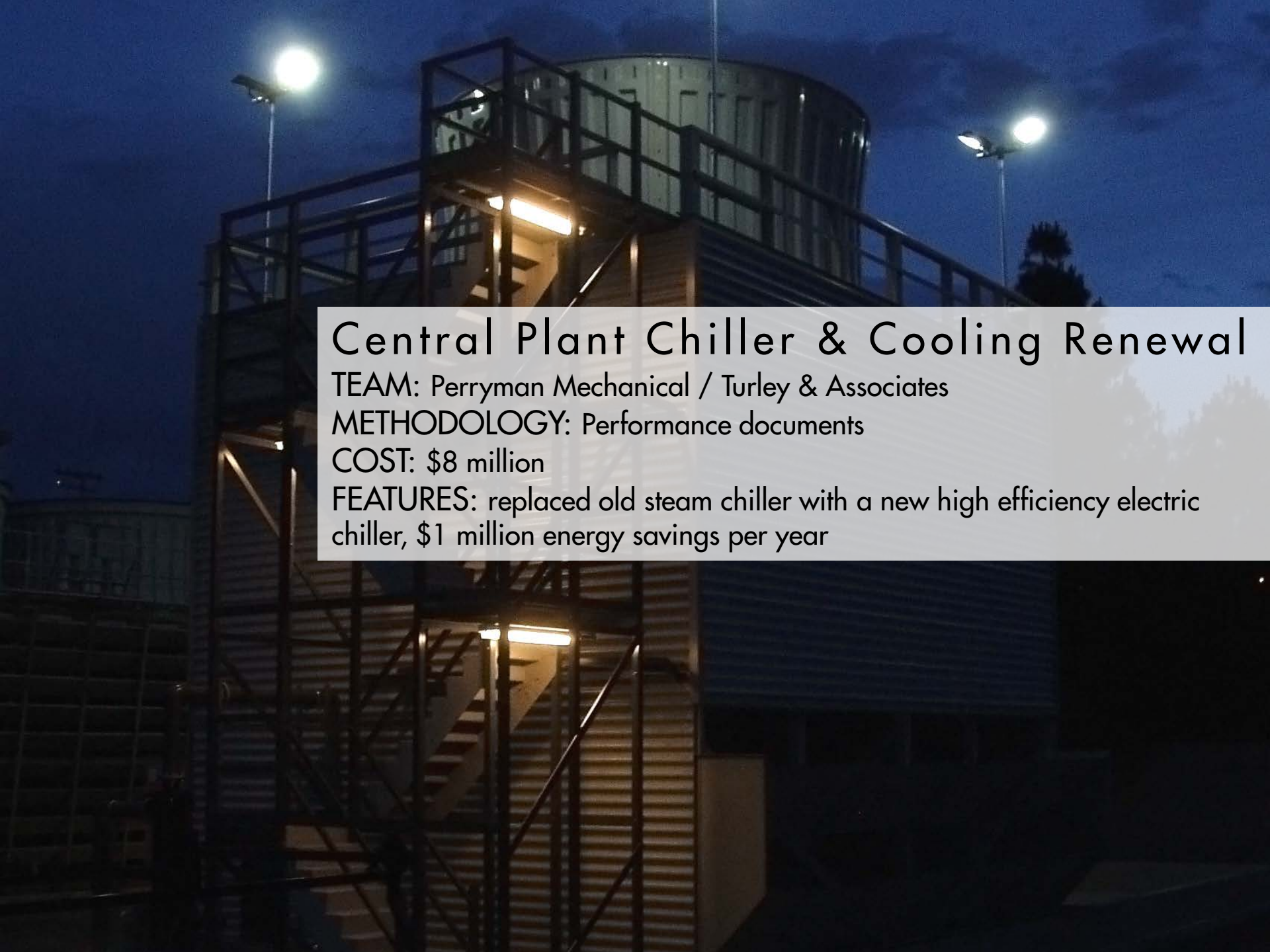
**TEAM:** Flintco / MFDB Architects Inc.

**METHODOLOGY:** Bridging documents, Best Value Selection

**COST:** \$7.5 million

**FEATURES:** state of the art educational facility including two classrooms, three lecture theaters





# Central Plant Chiller & Cooling Renewal

TEAM: Perryman Mechanical / Turley & Associates

METHODOLOGY: Performance documents

COST: \$8 million

FEATURES: replaced old steam chiller with a new high efficiency electric chiller, \$1 million energy savings per year



## Oxford Circle Dining Commons

TEAM: Valley Commercial / Mogavero Notestine Associates

METHODOLOGY: Bridging documents, Best Value Selection

COST: \$6.6 million

FEATURES: LEED Gold CI, 5 specialty food platforms, outdoor balcony seating, convenience store and solar thermal panels



The image shows a large industrial facility, likely a power plant or refinery, with a complex network of pipes and machinery. The scene is dimly lit, with bright overhead fluorescent lights illuminating the area. In the foreground, there are large, white, insulated pipes and a vertical stack of pipes. To the left, there is a large, dark, cylindrical piece of equipment. The floor is a dark, polished surface. The overall atmosphere is industrial and technical.

# Central Plant Renewal & Energy Improvement

TEAM: Airco Mechanical / Airco

METHODOLOGY: Performance documents

COST: \$7.8 million

FEATURES: saves \$2 million a year in energy costs



# Wastewater Treatment Plant Expansion

TEAM: Syblon & Reid / Psomas Engineering

METHODOLOGY: Performance documents

COST: \$7.65 million

FEATURES: added plant capacity to support campus growth





# Graduate School of Management

TEAM: Sundt Construction, Inc. / Sasaki

METHODOLOGY: Performance documents, Best Value Selection

COST: \$34.2 million

FEATURES: LEED Platinum, ground source heating/cooling, 100% ventilation air, daylighting, photovoltaics, rain screen construction





# Brewery, Winery & Food Pilot Facilities

TEAM: BNBuilders / Flad Architects

METHODOLOGY: Performance documents, Best Value Selections

COST: \$16 million

FEATURES: LEED Platinum, rainwater capture and reuse, 100KW photovoltaic array, heat recovery mechanical system





# Segundo Services Center

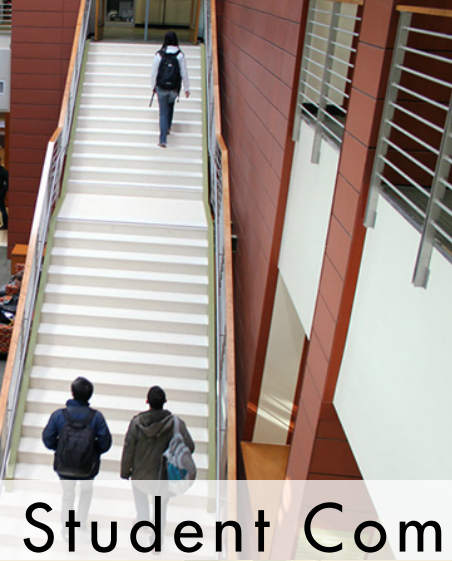
TEAM: McCarthy / WRNS Studio

METHODOLOGY: Bridging documents, Best Value Selection

COST: \$23 million

FEATURES: LEED Gold, green roof, photovoltaics, ASUCD offices, student housing offices, computer labs, lounges, convenience store





# Student Community Center

TEAM: Flintco / MFDB Architects Inc.

METHODOLOGY: Bridging documents, Best Value Selection

COST: \$13 million

FEATURES: LEED Gold/Platinum, daylit spaces with high efficiency lighting, student group offices, classrooms, computer lab, café, dual duct HVAC system

COMMUN

ENTER





## Tercero III (in progress)

**TEAM:** Sundt Construction / EHDD Architects

**METHODOLOGY:** Performance documents, Best Value Selections

**COST:** \$88.4 million

**FEATURES:** dormitory: 1,200 new beds, lounges, laundry facilities, study rooms; lecture hall, delivery of heat and hot water from waste heat, targeting LEED platinum



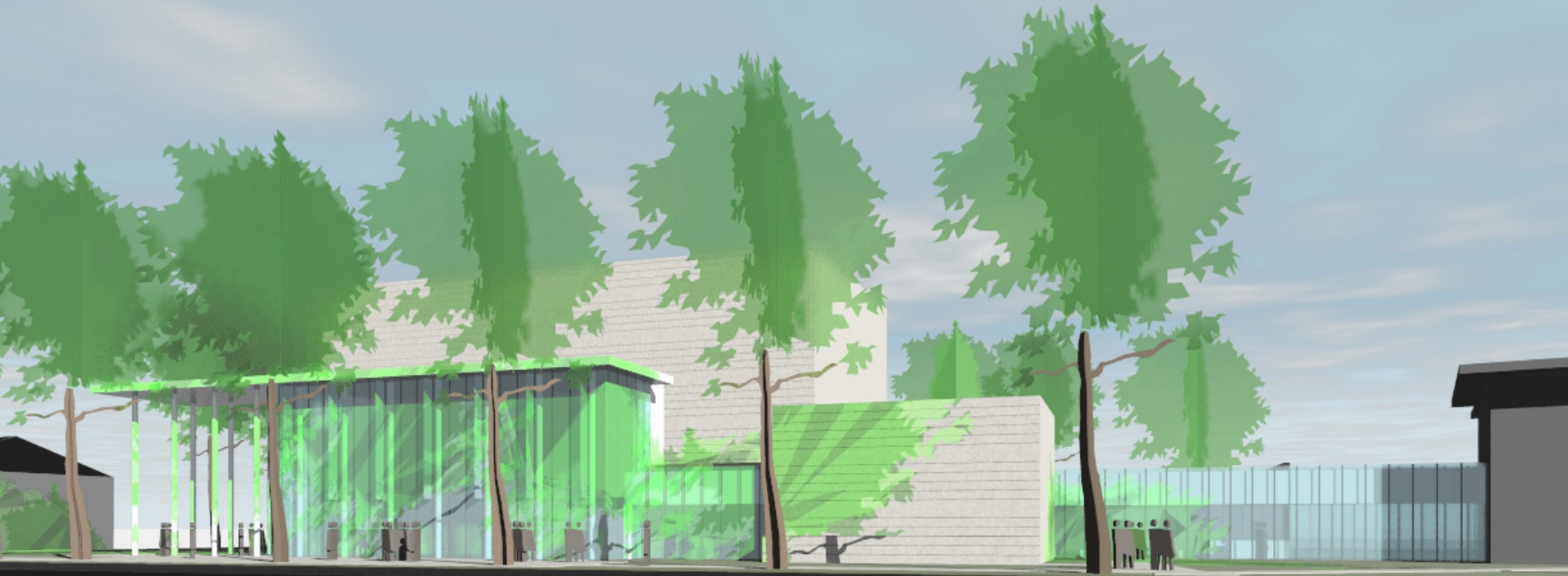
## Jess S. Jackson Winery (in progress)

TEAM: Pankow Builders / Siegel & Strain Architects

METHODOLOGY: Performance based, competition

COST: \$2.6 million

FEATURES: High performance, passive building, zero net energy, flexibility for utilities and building expansion



## Music Instruction & Recital Building (future)

MASTER ARCHITECT: HGA

METHODOLOGY: Bridging documents, Best Value Selection

COST: \$9 million

FEATURES: 400 seat recital/instructional hall, music teaching studio, practice rooms, LEED Gold



University Extension (future)

Castillian Hall (future 3<sup>rd</sup> party contract)

Orchard Park (future 3<sup>rd</sup> party contract)

Miscellaneous Renovations (future)

Miscellaneous Infrastructure (future)



An aerial photograph of a university campus, showing various buildings, parking lots, sports fields, and green spaces. A semi-transparent white rectangular box is overlaid in the center of the image, containing the word "Discussion" in a black, sans-serif font. The background shows a dense urban area with residential houses and a large body of water in the distance.

# Discussion