



LACCD BOND PROGRAM UPDATE AND PATHWAY TO THE FUTURE

Presented to
DBIA Western Pacific Region

James D. O'Reilly
Chief Facilities Executive, LACCD

Terri Mestas
Program Director, PMO - AECOM

June 3, 2014



1

ABOUT LACCD



LACCD Overview

- Established in 1969
- Governed by seven member Board of Trustees elected by a vote of the people
- Nation's largest community college district
- Encompasses 36 cities within 882 square miles
- Nine colleges and two satellite campuses serving more than 149,000 students
- Building program managed by Program Management Office (PMO) through a five-year agreement with AECOM in 2013



LACCD Overview-College Campuses

- Los Angeles City College
- East Los Angeles College
- Los Angeles Harbor College
- Los Angeles Mission College
- Pierce College
- Los Angeles Southwest College
- Los Angeles Trade Technical College
- Los Angeles Valley College
- West Los Angeles College



SATTELITE CAMPUS CENTERS

- South Gate Educational Center (South Gate)
- Van De Kamp Innovation Center (Los Angeles)

Bond Program Goals

- Prepare students to transfer to a 4-year college
- Have modern facilities that accommodate its academic mission
 - Required for State accreditation
- State-of-the-art facilities and infrastructure
 - To provide the training environment for 21st century careers
 - Three bonds were approved by a vote of the people to ensure the LACCD has the funding to develop the facilities
- Provide local communities with larger array of resources
 - Libraries, recreation facilities, meeting spaces
- Inject opportunities into the Los Angeles economy



Community Economic Development Program

- Board of Trustees resolution established a goal of 30% participation by Local, Small, Emerging and Disabled Veteran owned (LSEDEV) businesses
 - Part of Evaluation Criteria
 - Mentor Protégé Strategy
 - Partnerships for Apprenticeship Training
 - College Internship Programs that align with Career Paths



Program Process Initiatives

- Streamlined Processes – Simplified Contracts
- Accountability
- Optimal Performance
- Inclusion of Small and Local Business
- Reduce Cost of Competition for Proposers
- Conservative Use of Remaining Bond Funds





2

PROGRAM MANAGEMENT OFFICE AECOM

Accomplishments List

- 5,875 Invoices processed
 - 3,818 Checks Written
 - Program-wide spend is \$261M to-date
 - 499 Invoices
 - 12.8 D
 - Audit
 - 2,768
 - 750GB
 - 43,405
 - 2,589
 - 9TB data transferred from agin
 - 4M em
 - 5,000+
 - 10 Baseline Registers Completed
 - 600+
 - 45 College & PMO Risk Workshops Completed
 - 140+
 - 30 SO
 - 9 Live Audits
 - 1764
 - 9 Quality Audit Reports Issued
 - 49 BO
 - 517 PBA 's Processed
 - 9 Data Calls Completed for the Press
 - **950+ Contract Actions**
 - 27 Design-Bid-Build contracts for \$2.76M
 - 108 Fully Executed Professional Services contracts & amendments
 - 36 FF&E Master and Services Agreements
 - 339 Purchase Orders for \$4.32M
 - 488 Task Orders for \$14.7M
 - Oversight of \$400M in design and construction –
 - 29 Construction Starts
- 5,000+ risks being tracked and managed Program-wide**
- 600+ Project Budgets validated with standard contingencies**
- 950+ Contract Actions**
- Oversight of \$400M in construction**
- 29 Construction Starts**
- \$356M of Bond Projects DSA Certified**
- Safety Recordable Incident Rate 2014 Q1=2.41 (goal 3.4)**
- Implemented Key Performance Indicators**
- District-wide Quality Audits**
- 41 Data Calls Completed for the District
 - 19 Monthly KPIs published (PMO-11, CPM-8)
 - Implemented Key Performance Indicators
 - **District wide Quality Audits**



Program Enhancements

- Performance Evaluations
- Past Performance Consideration
- Online Vendor Portal
- Electronic Procurement Process
- Sources Sought (pre-RFP)
 - Networking Opportunity



Program Enhancements

- Qualify on a Project Basis
 - No annual DB prequal
- Streamlined General Conditions
- More Options for Project Delivery Methods
- Consistent Delivery – SOPs
- Bundling Opportunities



Program Enhancements

- Better defined SOWs
- Clear roles and responsibilities
- Qualification Oriented Selection
- Bench Contract Model
- Professional Services – annual performance check





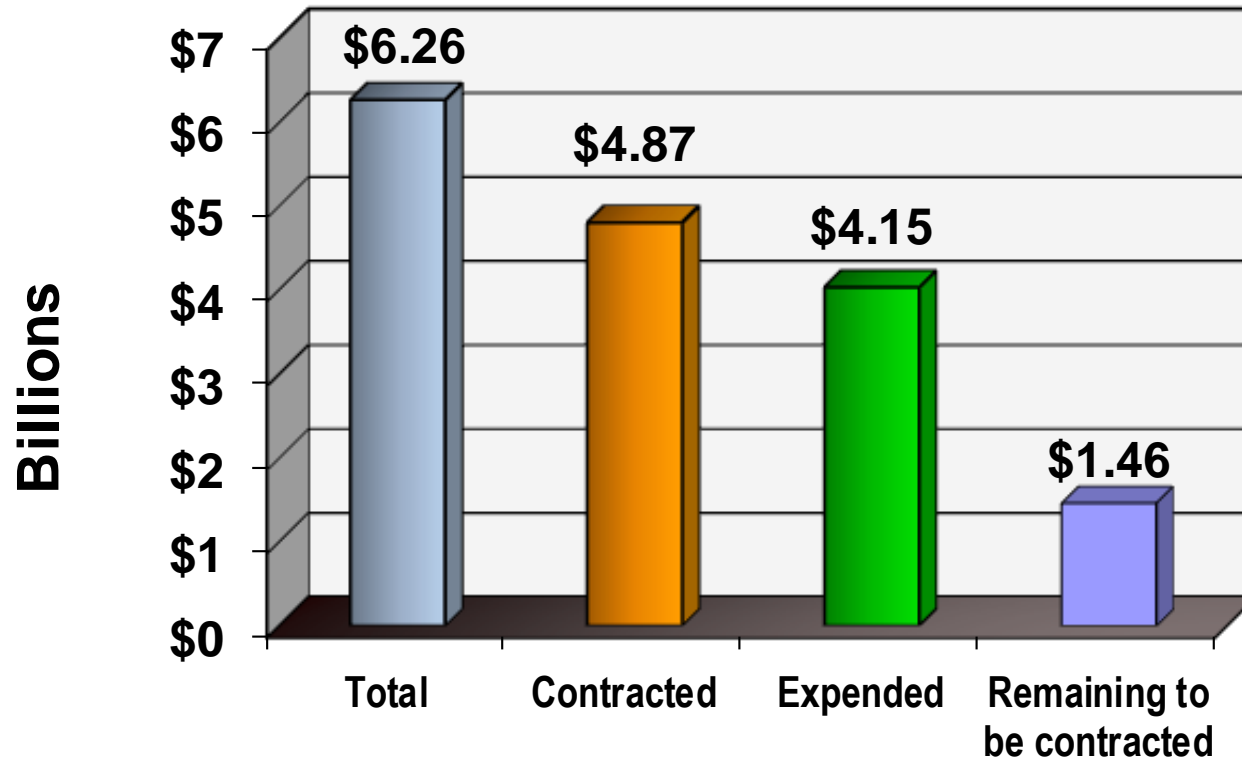
CED* Program Enhancements

- 10-day Prompt Pay requirement for subconsultants
- RFP evaluation criteria for local, small, emerging and disabled veteran-owned (LSEDEV) business participation
- Accepts certification from other agencies (e.g. MTA)
- Improved access to contracting opportunities and resources
- Training and workshops

*-Community Economic Development

Program Funding

Through February 2014



Pending Procurements



	In design	In programming
City College	4	5
East L.A. College	4	3
Harbor College	2	1
Mission College	0	10
Pierce College	5	15
Southwest College	2	5
Trade-Tech College	7	7
Valley College	5	7
West L.A. College	5	19
	34	72



3

PMO ROADMAP

Roadmap to a Strong Program Finish

- Create a World Class Program
 - Innovations and enhancements made to critical Program areas to ensure District-wide Bond Program success.
- Built on 5 Principles:



Performance

- **Creating a world class team**

- New and legacy staff
- Required technical expertise and experience
- Team restructure to allow for oversight at project level

- **Consistent Effective Delivery**

- Standard Operating Procedures
- Training
- Defined roles and responsibilities

- **Clear Expectations**

- New vision of success and excellence
- Team building
- New performance baseline



Efficiency

- **Flexible Organization**
 - Quick response to program needs
- **Standard Operating Procedures (SOP) Development**
- **Procurement Enhancements**
 - PlanetBids and electronic drawings
- **Program-wide IT Enhancements**
 - PMIS/Outlook/Critical server storage



Efficiency

- **Improved Master Plan Update Process**
- **Workshops on all phases of the project lifecycle**
 - Industry Workshops
- **Streamlined Procurement Process**
- **Enhanced Management of Funds**
 - Project Initiation Process
 - Risk Management Program
 - Central Funds Alignment
 - New Project Baseline (Budget and Schedule)



Transparency

- Web-enabled SOPs
- Sources Sought
- College PMO Collaboration
- PlanetBids
- Key Performance Indicators and audits
- PMIS/Dashboards



Inclusivity

- **Contract Procurement**

- Sources Sought & Pre-proposal conferences
- PlanetBids

- **Orientations & Workshops**

- **Training**

- **Partnering**

- **Increased opportunity for LSEDV to prime, partner or JV**

- **Mentor-protégé program**

- **Opportunity to periodically present firm qualifications**





Accountability

- Audits (internal and external)
- Key Performance Indicators
- Quality Management Program
- Performance Reviews
 - 360 reviews
 - Annual performance evaluations
 - Staff performance evaluations
- Performance notifications
- Voice of the Client





4

CURRENT AND UPCOMING FACILITIES DEVELOPMENT OPPORTUNITIES

Los Angeles City College

South Gym Renovation Project

Heliotrope Drive



Architect: Gonzales Goodale Architects

Construction budget: \$8,000,000

Delivery type: Lease-Leaseback

DSA Approval of Design:

Done

Expected RFQ /RFP Issuance Date

TBD

Expected Construction Commencement (Notice to Proceed)

TBD



Los Angeles City College Da Vinci Hall Modernization Project

center of campus – off of Vermont Avenue



Architect: Harley Ellis Devereaux
Construction budget: \$15,000,000
Delivery type: Lease-Leaseback

Expected DSA Approval:	2014
Expected RFQ/RFP Issuance Date:	Feb 2015
Expected Construction Commencement (Notice to Proceed):	TBD



Los Angeles Valley College Athletic Training Facility Project

east side of campus between Hatteras St. and Burbank Blvd.



Architect: Cannon Design
Construction budget: \$22,000,000
Delivery type: Lease-Leaseback

DSA Approval:	Complete
Expected RFQ/RFP Issuance Date	TBD 2014
Expected Construction Commencement (Notice to Proceed)	TBD 2014



Pierce College North of Mall Bundle Project

central campus with reasonable construction access



Architect: PBWS Architects
Construction budget: \$38,000,000
Delivery method: Lease-Leaseback

Includes Other Building Renovation and Site Work

Expected RFQ/RFP Issuance Date:	TBD 2014
Expected Construction Commencement (Notice to Proceed)	TBD 2014



West Los Angeles College Technology Learning Center 2

mid-campus adjacent to the faculty office building and east of parking lot 5



- LEGEND**
- Proposed Building
 - Proposed Renovation
 - Existing Building
 - Proposed Demolition

Programming Architect :	WestEdge
Construction Budget:	\$13M
Delivery Type:	Design-build

Expected RFQ/RFP Issuance Date: TBD 2014

Los Angeles Mission College Central Plant Project

northeast corner of the campus



Architect: TBD
Construction budget: \$12.5M
Delivery method: Design-Build

Expected RFQ/RFP Issuance Date: TBD 2014
Expected Construction Commencement (Notice to Proceed): TBD 2015



Los Angeles Valley College Media and Performing Arts Center

northern end of the central mall



Architect Steven Ehrlich Architects

Construction Budget \$65M

Delivery Type Lease-Leaseback

DSA Approval: 2013

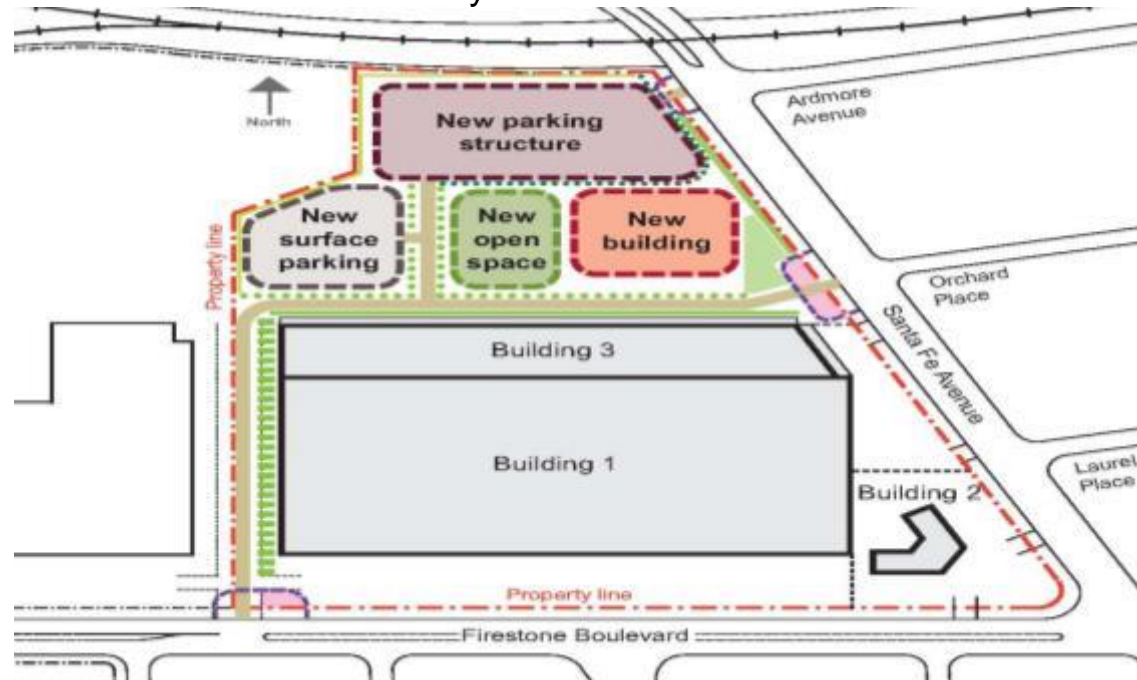
Expected RFQ/RFP Issuance Date TBD

Expected Construction Commencement (Notice to Proceed) TBD



East Los Angeles College Firestone Education Center

City of South Gate



Architect TBD
Construction Budget TBD
Project Delivery Type TBD

Expected Construction Commencement (Notice to Proceed): 2017-2018



Certain Other Upcoming Opportunities by College

City College



Project Name	RFP/RFQ Issued	Estimated Construction Value
Cesar Chavez – Admin Bldg Modernization	2017 Q1	\$18M
Central Plant Upgrade and Roadway, Walkway, Grounds, Parking Lot (RWGPL) projects	2015 Q3	\$3.2M
Security Project (Emergency Lighting, Fire Alarm, and Security Systems)	2016 Q1	\$2.8M
Red Line Project	2014 Q3	\$4.5M

East Los Angeles College

Project Name	RFP/RFQ Issued	Estimated Construction Value
Firestone Satellite Campus	2014 Q-4	\$75M
Bungalow Complex	TBD	\$5M



Harbor College



Project Name	RFP/RFQ Issued	Estimated Construction Value
Harbor Teacher Preparation Academy Developed by LACCD with funding from LAUSD	2015 Q1	\$15M

Mission College



Project Name	RFP/RFQ Issued	Estimated Construction Value
Transportation, Pedestrian Access, and Traffic Mitigation projects	TBD	\$6.5M
Storm water projects	TBD	\$1.8M

Pierce College



Project Name	RFP/RFQ Issued	Estimated Construction Value
Horticulture Facility	TBD	\$3.5M
West Central Plant Expansion	TBD	\$5M
PE Facilities Improvements	TBD	\$700K
Digital Arts and Media Building	2015 Q1	\$18M
Expanded Automotive and New Technical Education Facilities	2015 Q1	\$23M
South of Mall	2014 Q3	\$7M

Southwest College



Project Name	RFP/RFQ Issued	Estimated Construction Value
Transit Centers	Ongoing	\$760K
School of Math and Science (SoMS)	TBD	\$20M
Infrastructure Security	TBD	\$350K

Trade-Technical College

Project Name	RFP/RFQ Issued	Estimated Construction Value
Grand Avenue Enhancement and Blue Line Station	TBD	\$1.8M
Art and Culinary Arts Phase 2	TBD	\$25M
Renovate Sequoia Hall	TBD	\$15M
North Quad Site Development, Main Electrical Distribution, and Storm Water	TBD	\$6M



Valley College



Project Name	RFP/RFQ Issued	Estimated Construction Value
ADA and Allied Health and Science Center	2014 Q3	\$6M
Campus Center Renovations and Sustainable Mall	2014 Q4	\$6.3M
Campus Utility Improvements (Central Plant & TES)	2014 Q3	\$7.7M

West Los Angeles College

Project Name	RFP/RFQ Issued	Estimated Construction Value
Performing Arts Amphitheater	2014 Q3	\$750K
HLRC 1 st , 2 nd and 4 th Floors	2015 Q1	\$4M
Path of Travel projects	2015 Q1	\$2.7M
Omni-Acoustic Lab	2015 Q1	\$600K
ADA project	2015 Q1	\$500K
SC-College SPT Facility	2015 Q1	\$750K
SMA –MODS for Allied Health	2015 Q1	\$1.7M
Watson Center 2	2014 Q3	\$5.5M





Upcoming Professional Services Procurements



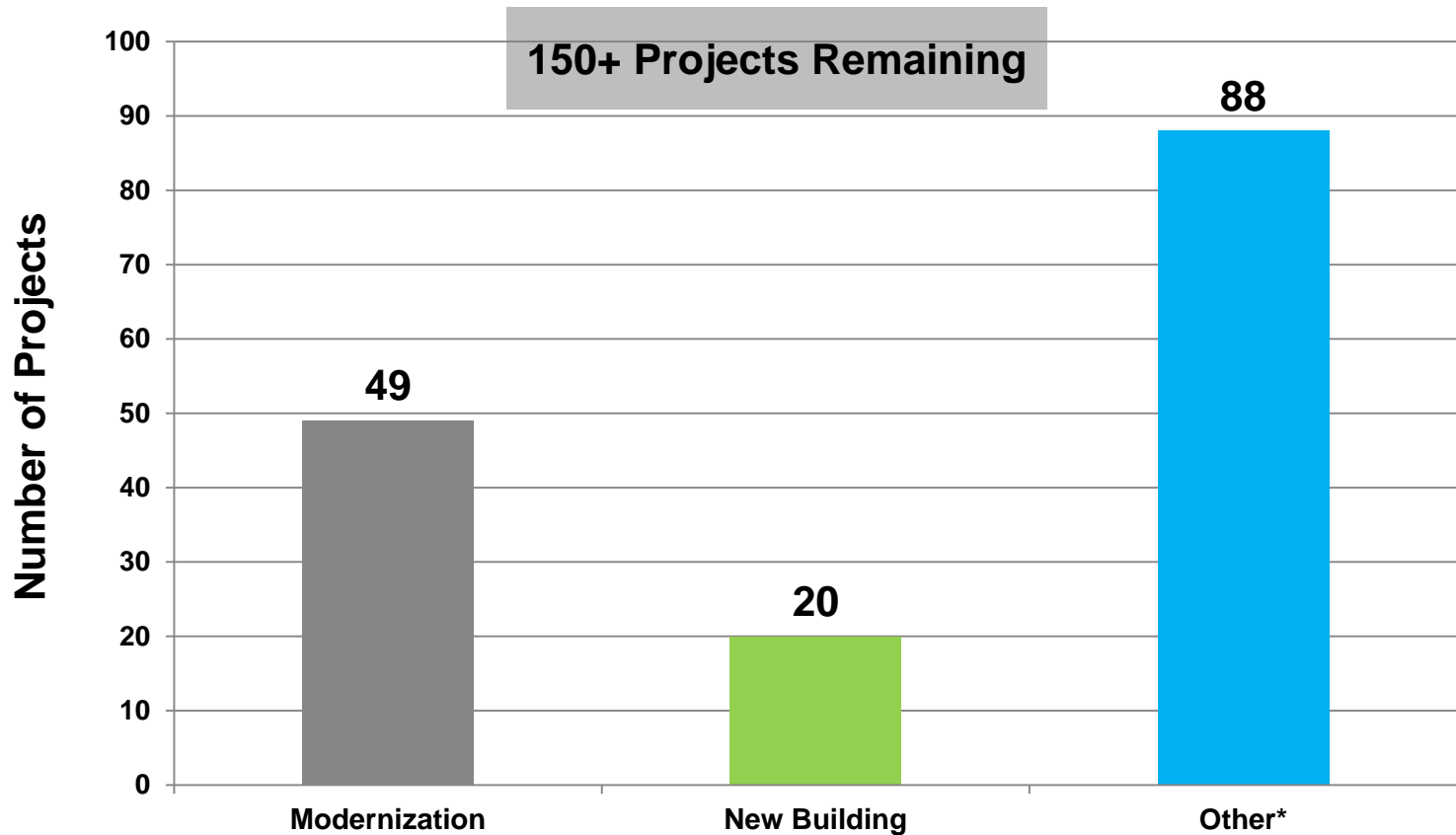
Services	Estimated Dates
Owner-Controlled Insurance Program - Program Administrator	RFP Issued February 21, 2014 BOT Award June 2014
Owner-Controlled Insurance Program - Insurance Provider	RFP Issued March 2014 BOT Award TBD 2014
Multiple Award Task Order Contract - District-wide Professional Services	RFP Issued Early March 2014 Proposals Due March 2014 BOT Award July 2014



Services	Estimated Dates
Website Development & Maintenance Services	BOT Award June 2014
Design Services Bench	Schedule in planning, expected release June 2014
Commissioning Services Bench	Schedule in planning, expected release June 2014 BOT Award August 2014

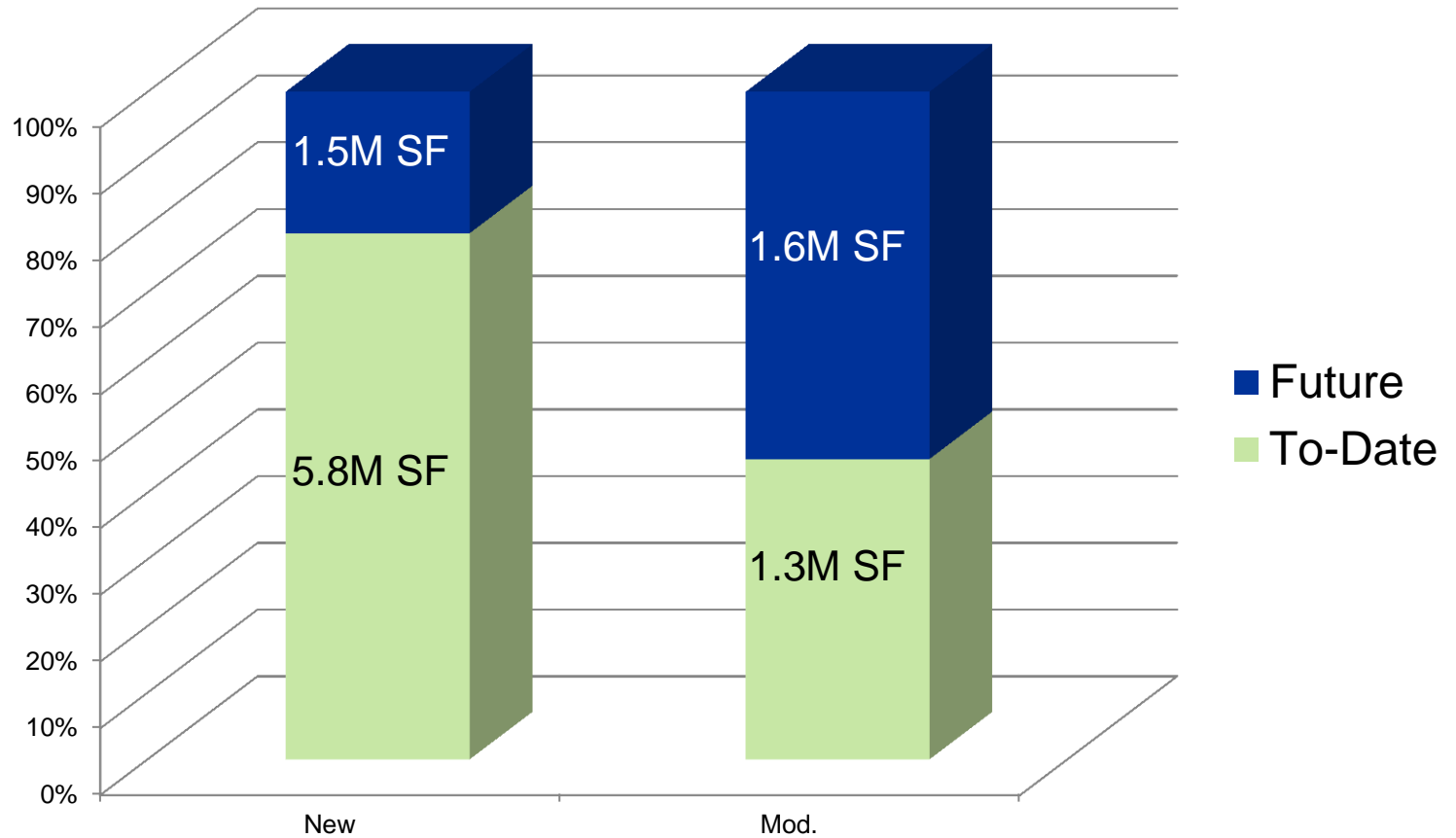
Future Work: Projects Remaining

Figures include subprojects and demolition (without bundling)



*Other includes Infrastructure, Parking, Athletic Fields, Landscape, and Demolition

Percentage Complete vs. Remaining: New vs. Mod





How to get involved with the Bond Program



www.build-laccd.org

LACCD Sustainable Building Program

Contracting & Bidding Site

Community & Media Site



[Office365 Email login](#) | [Proliance On Demand](#)

[LACCD - Office365 User Guide.docx](#)



BuildLACCD | Doing Business With Us

[Doing Business With Us](#)

[Notice to Bidders](#)

[Current Opportunities
- Construction](#)

[Current Opportunities
- Professional Services](#)

[Design Build
- Proposals](#)

[Bench Management](#)

[Furniture and Bulk
Procurement](#)

[Outreach and Other
Programs](#)

[Project Related
Resources](#)

[LACCD Internship
Program](#)

Click here to view and download bid documents.

Latest Updates

DSA Snapshot- News and Updates!

[DSA Snapshot September 2013\(Posted 10/11/13\)](#)

[DSA Update Box Naming Convention\(Posted 09/16/13\)](#)

[DSA Update Forms for Inspection Card Projects \(Posted 09/16/13\)](#)

[CPM Contact List](#)

Contractor Mailing List

General contractors, sub-contractors who would like to add their company to LACCD bidders list, please email:
contracts@build-laccd.org

contracts@build-laccd.org

Looking for the community and media site? It's at [LACCD Builds Green](#).

cal ar
The Facility Standards listed below for each campus of the district are commonly used and...
Facilities, Management and Operations on their particular campus. The list is not intended to be definitive, nor should the list exclude proposing new, and



Questions?

Thank you!