





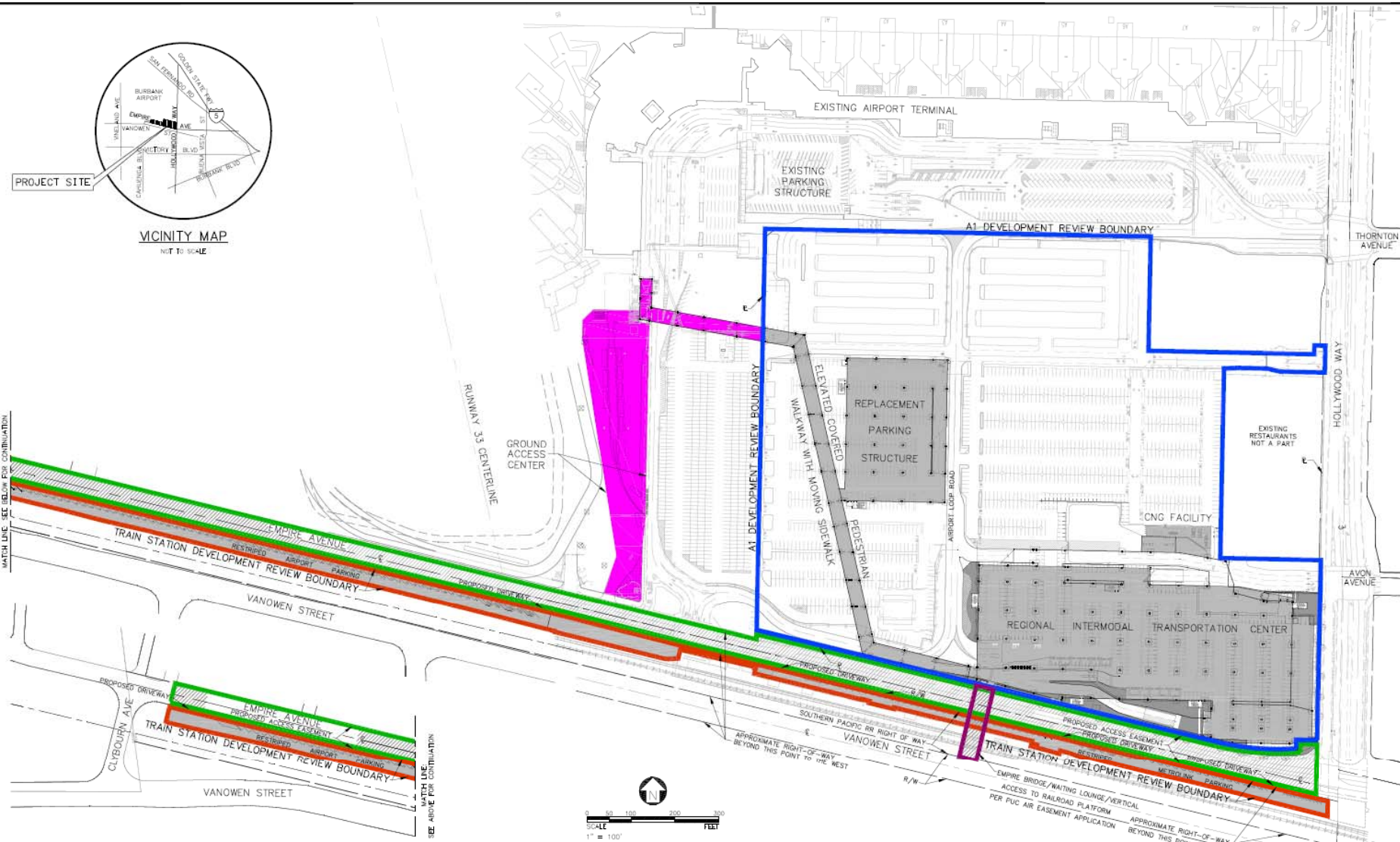


VICINITY MAP
NOT TO SCALE

PROJECT SITE

MATCH LINE - SEE BELOW FOR CONTINUATION

SEE ABOVE FOR CONTINUATION



Note: For reduced sized prints, original scale is in inches

FOR DEVELOPMENT REVIEW ONLY

NO.	DATE	DESCRIPTION	BY	NO.	DATE	DESCRIPTION	BY



Troller Mayer Associates, Inc.
 Landscape Architecture Planning Urban Design
 12811 Vanowen Road, Suite 400
 Vanowen, California 91790
 Tel: (909) 481-1100
 Fax: (909) 481-1101
 www.trollermayer.com

PSOMAS
 650 South Flower Street, Suite 400
 Los Angeles, CA 90071
 (310) 221-8100 (310) 221-8111 fax
 www.psomas.com

SKA
 400 West Broadway
 Suite 3000
 Burbank, CA 91502
 Tel: 818-481-5000
 Fax: 818-481-5001
 www.ska.com



PROJECT AUTHORITY APPROVAL

PROJECT: BURBANK RTC

SHEET TITLE:
 A1 DEVELOPMENT REVIEW PACKAGE
 OVERALL KEY MAP

DATE: 02/05/10
 DRAWN BY: PH
 CHECKED BY: AN
 SHEET NO.: C-001
 OF 43
 REVIEW



1 RITC SOUTH-WEST RENDERING
SCALE: NTS

DATE	DESCRIPTION	BY	DATE	DESCRIPTION	BY



Teller Mayer Associates, Inc.
 Landscape Architecture Planning Urban Design
 1481 Avenue Road, Suite 9
 Brea, CA 92621
 (714) 991-1100
 www.teller-mayer.com

PSOMAS
 555 South Flower Street, Suite 4000
 Los Angeles, CA 90071
 (213) 223-1600 (213) 223-1444 fax
 www.psomas.com



URS
 4800 Pacific Avenue
 Suite 1000
 Irvine, CA 92618
 (949) 451-5000
 www.urscorp.com

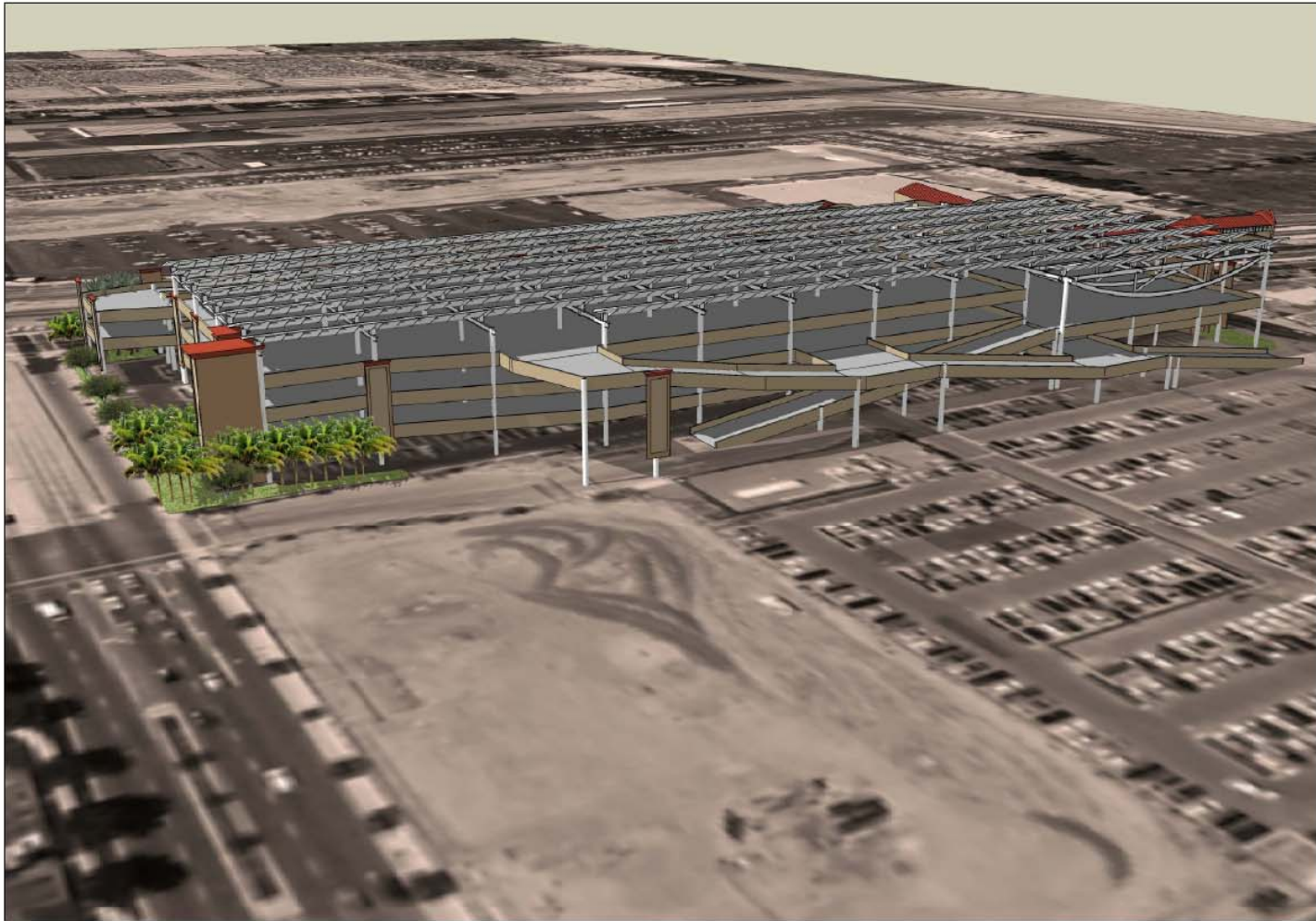


APPROVAL AUTHORITY APPROVAL

PROJECT
 BURBANK RITC

SHEET TITLE
 RITC RENDERING

DATE
 01/21/10
 DRAWN BY
 WHB
 CHECKED BY
 TGG
 SHEET No
 A-901
 X OF XX
 REV.



1 RITC NORTH-EAST RENDERING
SCALE: NTS

Δ	DATE	DESCRIPTION	BY	Δ	DATE	DESCRIPTION	BY



TranSystems
10114 Vanowen Street, Suite 400
Van Nuys, CA 91411
Phone: 818.709.2500
Fax: 818.709.2500

Jroller Mayer Associates, Inc.
Landscape Architecture Planning Urban Design
1400 Canyon Plaza, Suite 8
Burbank, CA 91502
Phone: 818.333.4400
Fax: 818.333.4400

PSOMAS
350 South Flower Street, Suite 400
Los Angeles, CA 90071
Phone: 213.223-4600 (213) 223-1444 Fax:
www.psomas.com



5000 Pacific Avenue
South Pasadena
California 91068-9999
Phone: 626.799.2600
Fax: 626.799.2601
www.urscorp.com



AIRPORT AUTHORITY APPROVAL

PROJECT:
BURBANK RITC

SHEET TITLE:
RITC RENDERING

DATE:
02/03/10
DRAWN BY:
WHS
CHECKED BY:
TGG
SHEET No:
A-902
X OF XX
REV:



1 RITC SOUTH-EAST RENDERING
SCALE: NTS

DATE	DESCRIPTION	BY	DATE	DESCRIPTION	BY

Trans Systems
 1014 West Street, Suite 400
 Los Angeles, CA 90017
 PH: 310.207.1000
 WWW.TRANSYSTEMS.COM

miyamoto.
 100 West Broadway, Suite 100
 Los Angeles, CA 90012
 PH: 213.622.1000
 WWW.MIYAMOTO.COM

Teller Mayer Associates, Inc.
 Landscape Architecture Planning Urban Design
 1401 Vermont Road, Suite B
 Burbank, California 91502
 PH: 818.333.1000
 WWW.TELLERMAYER.COM

PSOMAS
 555 South Flower Street, Suite 4000
 Los Angeles, CA 90071
 PH: 213.223-1400 FAX: 213.223-1444
 WWW.PSOMAS.COM

SKA
 1000 Wilshire Blvd, Suite 1000
 Los Angeles, CA 90017
 PH: 213.486.1000
 WWW.SKA.COM

URS
 4800 Wilshire Blvd, Suite 2000
 Los Angeles, CA 90048
 PH: 310.551.1000
 WWW.URS.COM

REPORT AUTHORITY APPROVAL



REPORT AUTHORITY APPROVAL

PROJECT
BURBANK RITC

SHEET TITLE
RITC RENDERING

DATE
01/22/10
DRAWN BY
WHB
CHECKED BY
TGG
SHEET No
A-903
X OF XX
REV



1 RITC SOUTH-WEST RENDERING
SCALE: NTS

DATE	DESCRIPTION	BY	DATE	DESCRIPTION	BY



TRANSPORT AUTHORITY APPROVAL

PROJECT:
BURBANK RITC

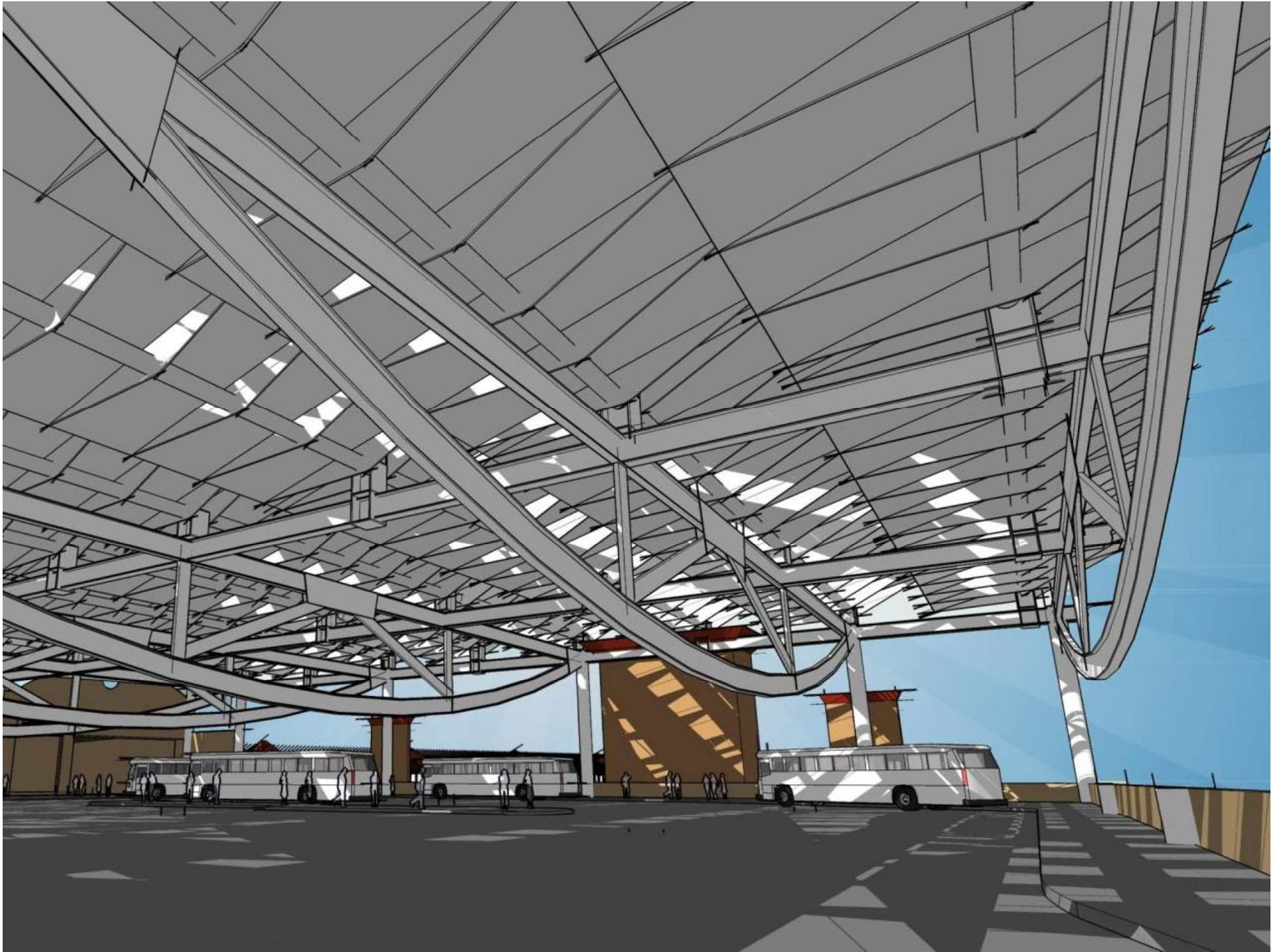
SHEET TITLE:
RITC RENDERING

DATE 01/21/10	SHEET No. A-904
DRAWN BY WFB	X OF XX
CHECKED BY TGC	REV.

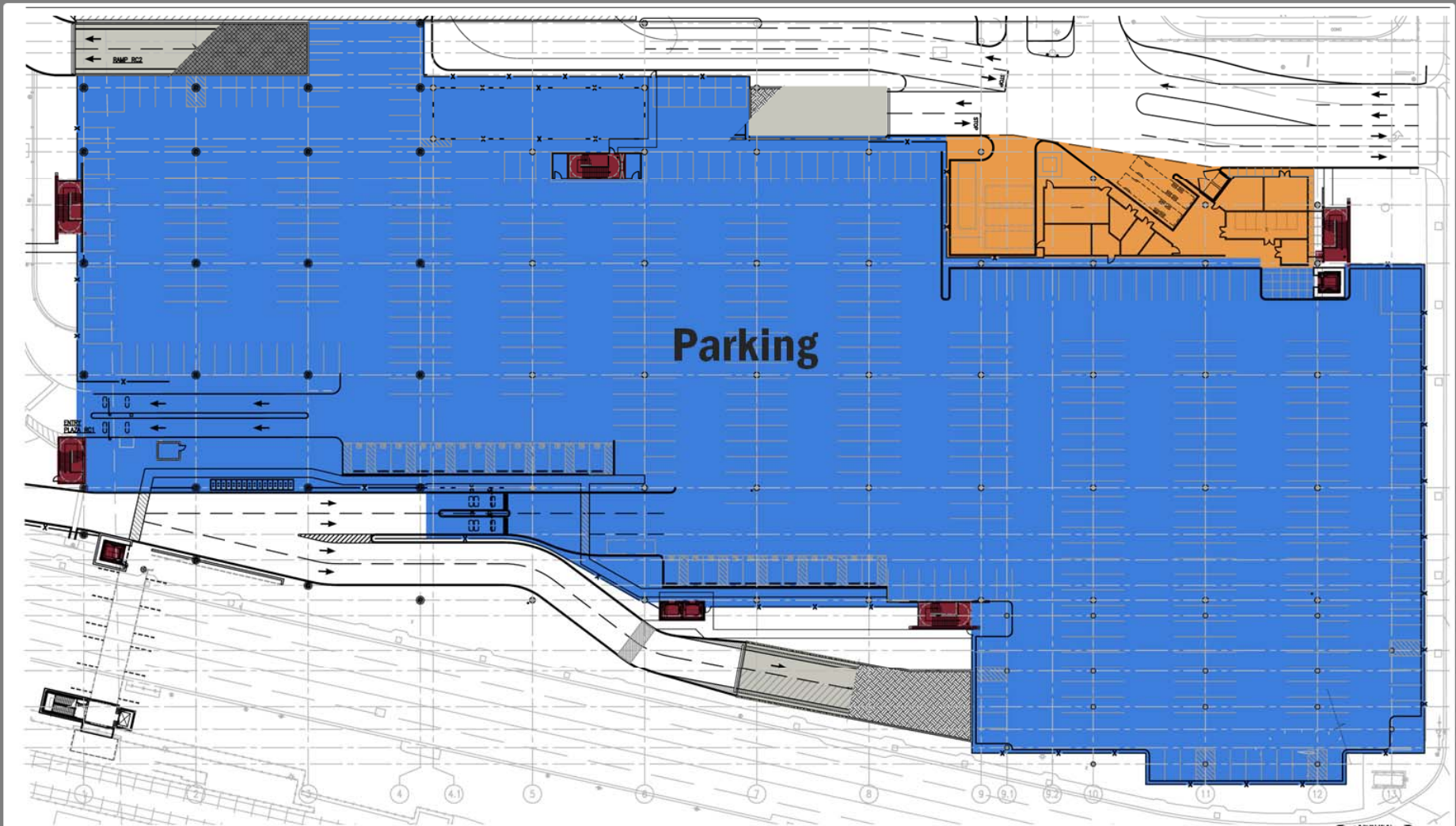








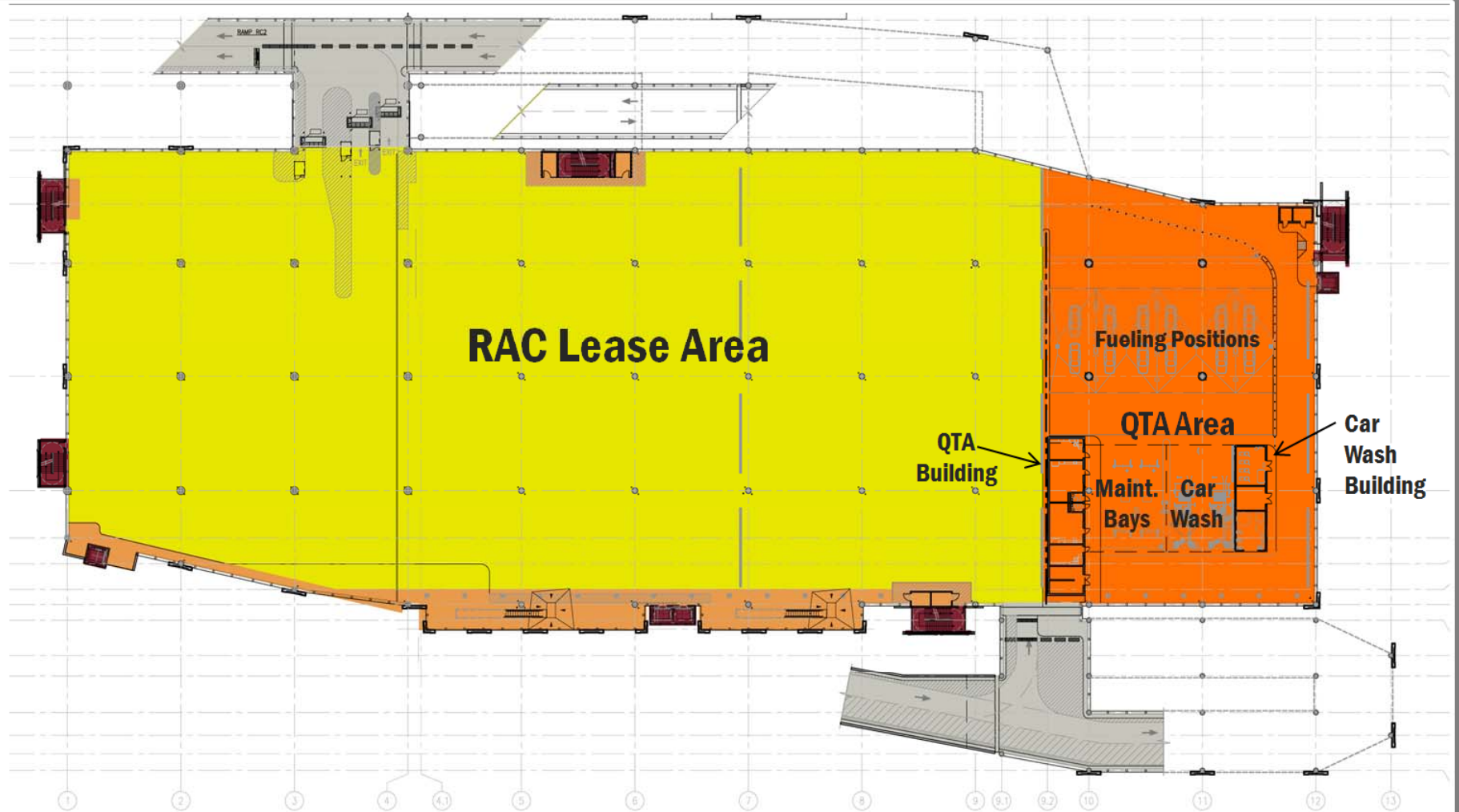
II. Project Overview – RITC Level 1



RITC – Level 1 Floor Plan



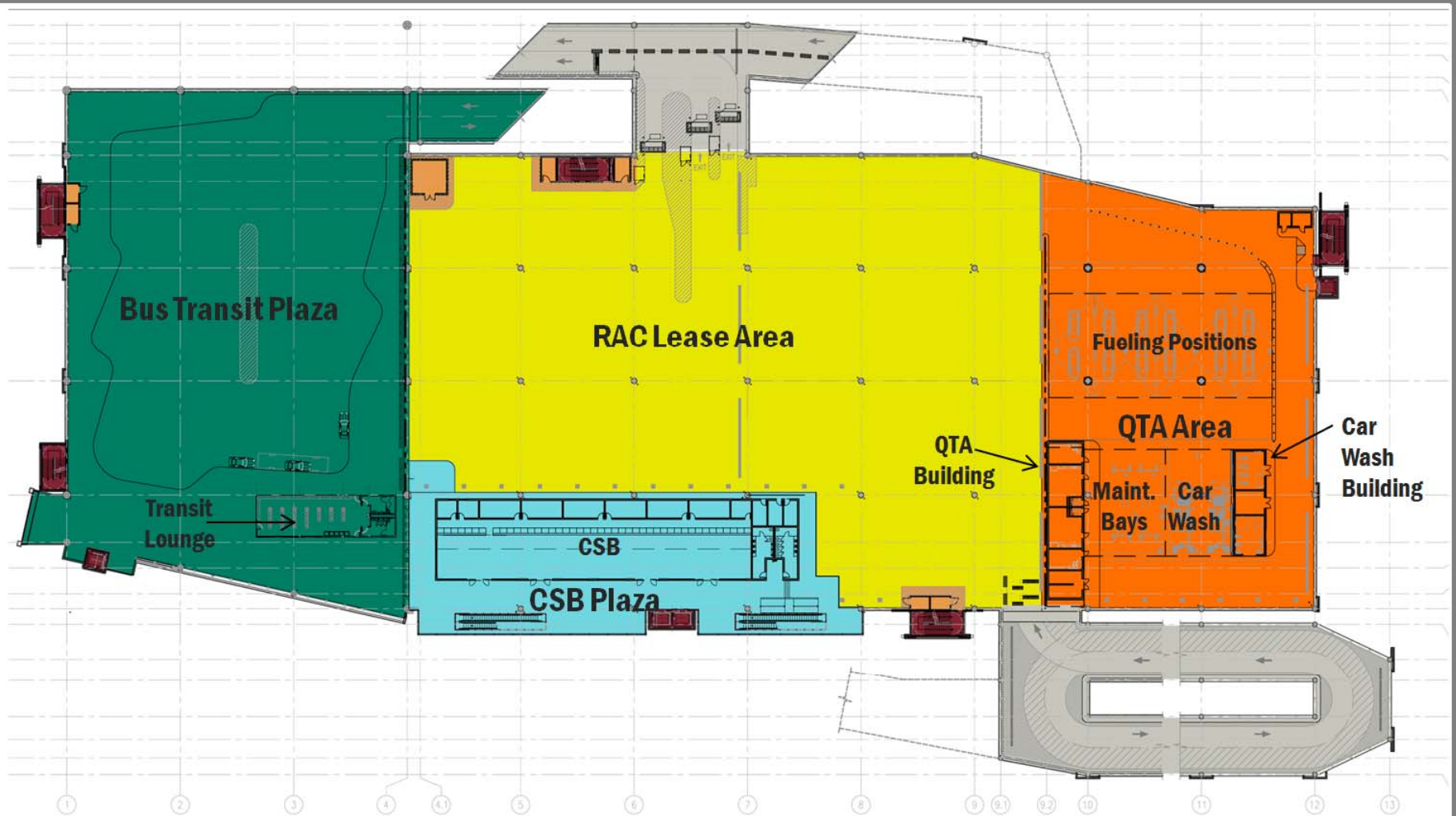
II. Project Overview – RITC Level 2



RITC – Level 2 Floor Plan



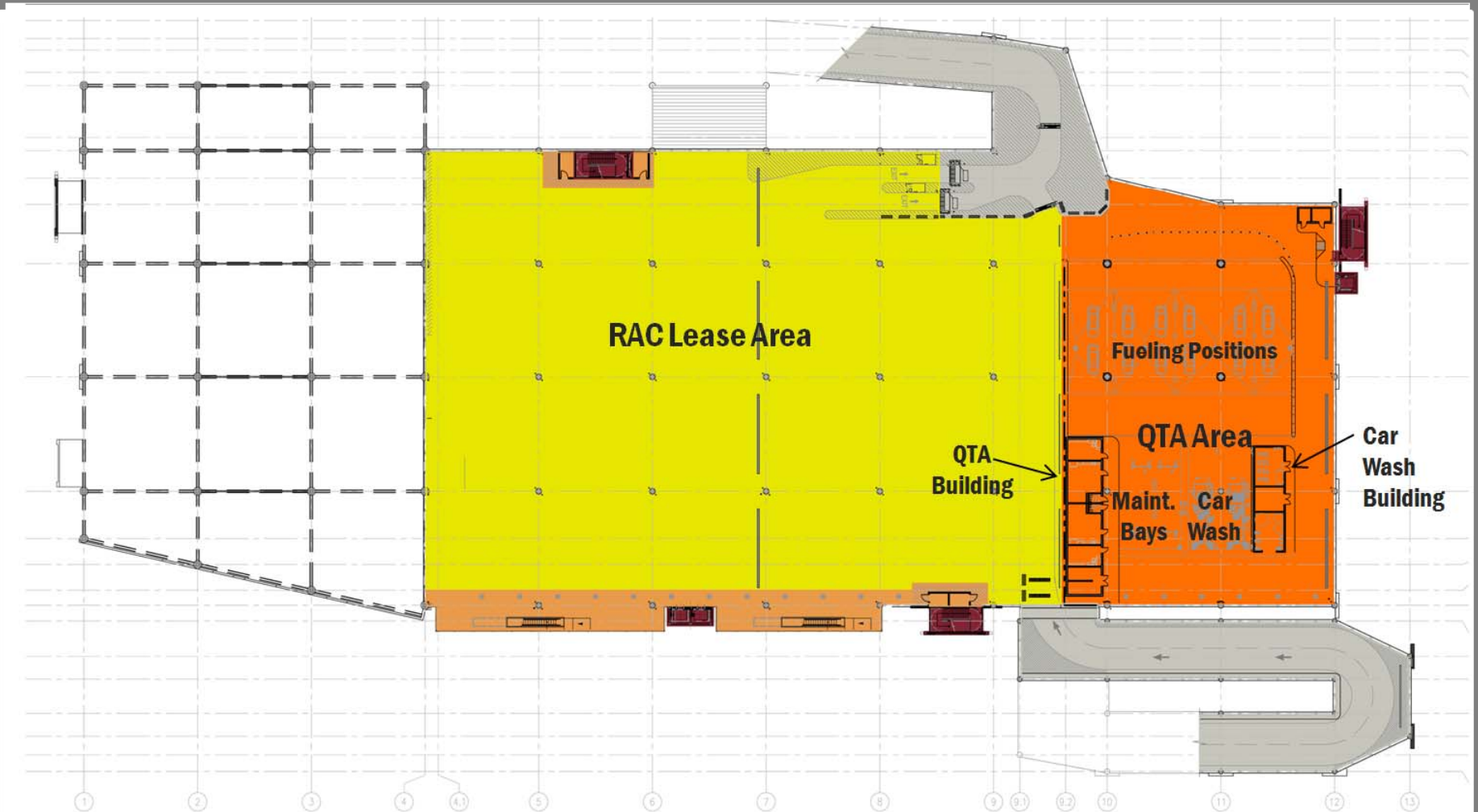
II. Project Overview – RITC Level 3



RITC – Level 3 Floor Plan

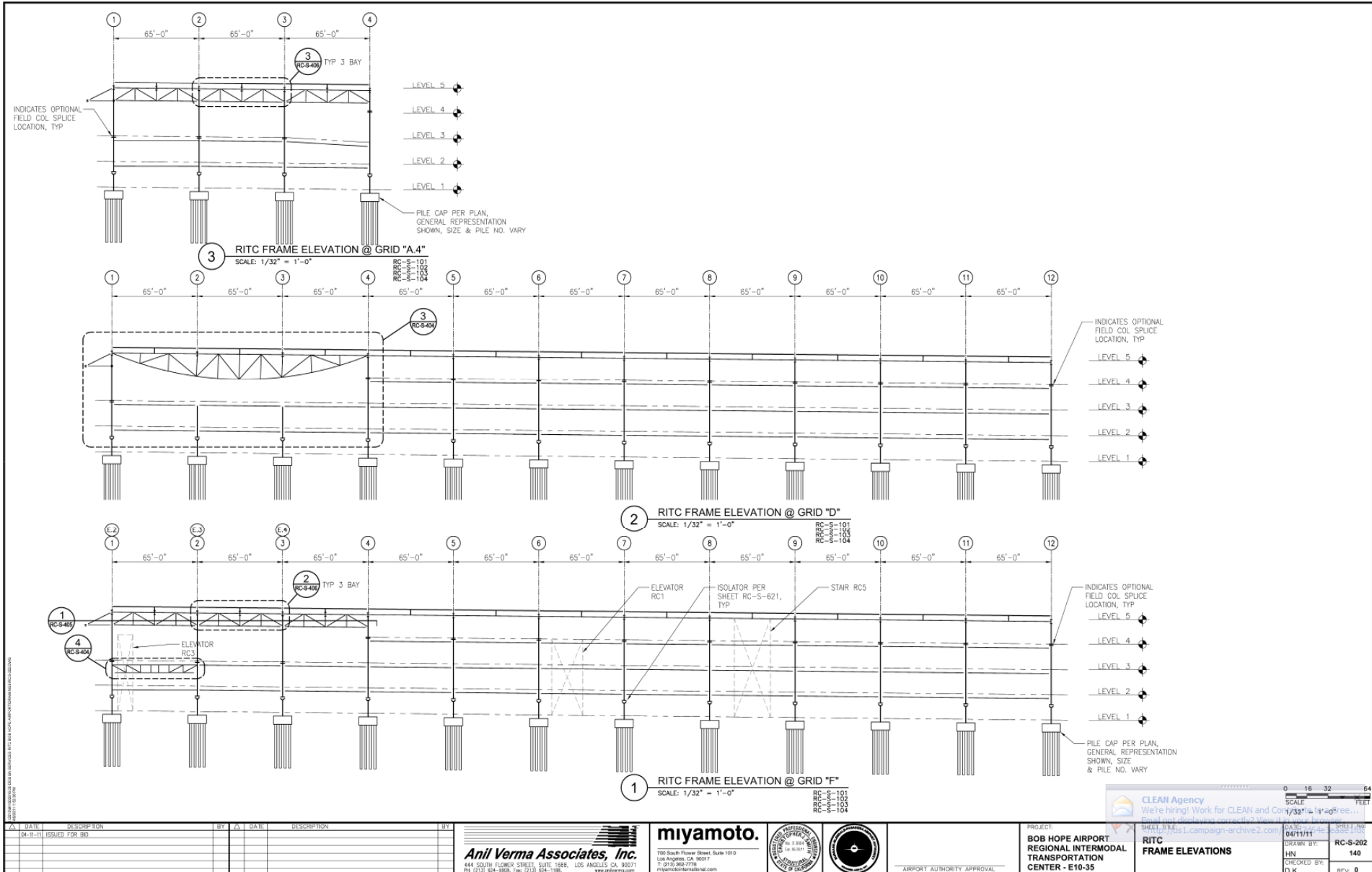


II. Project Overview – RITC Level 4



RITC – Level 4 Floor Plan





DATE	DESCRIPTION	BY	DATE	DESCRIPTION
04-18-11	ISSUED FOR BID			

Anil Verma Associates, Inc.
 444 SOUTH FLOWER STREET, SUITE 1688, LOS ANGELES, CA 90071
 PH: (213) 624-3858, Fax: (213) 624-1186, www.ava.com

miyamoto.
 790 South Flower Street, Suite 1010
 Los Angeles, CA 90017
 T: (213) 962-7778
 miyamoto@miyamoto.com



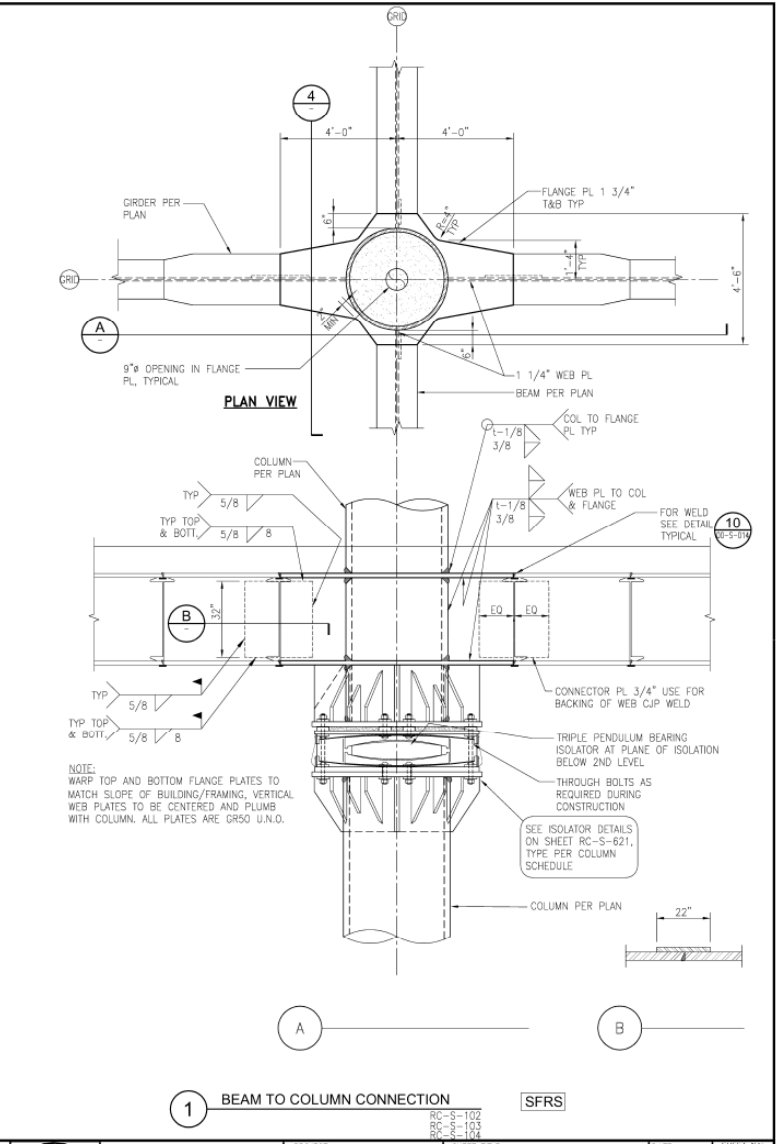
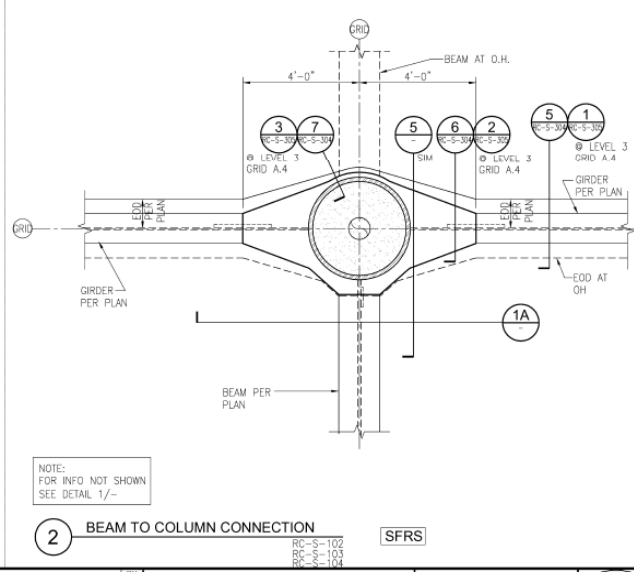
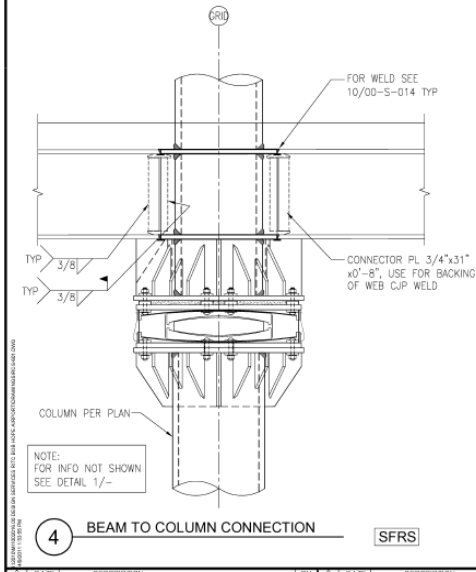
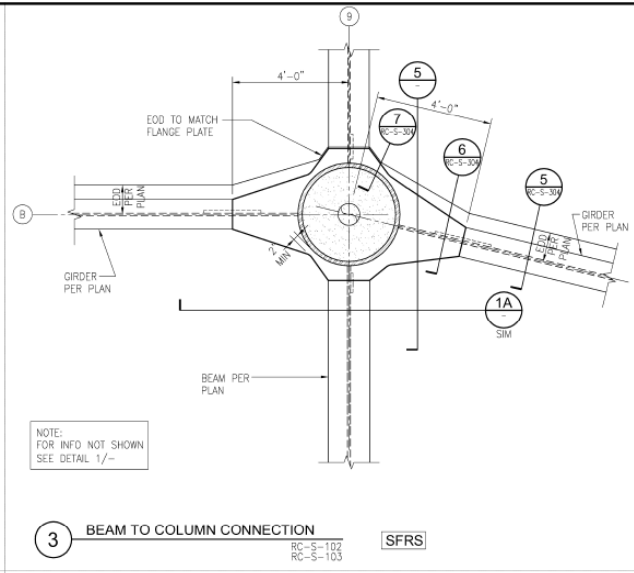
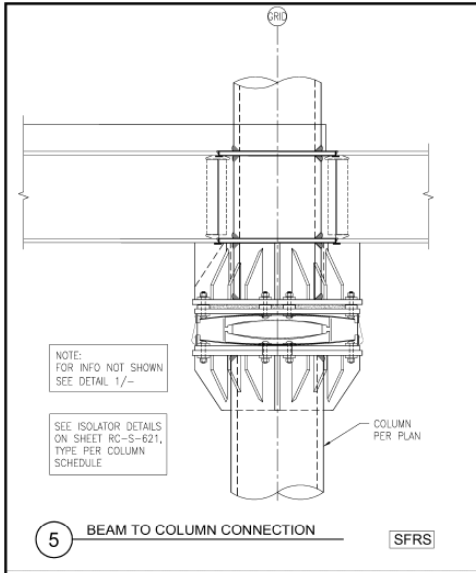
PROJECT:
**BOB HOPE AIRPORT
 REGIONAL INTERMODAL
 TRANSPORTATION
 CENTER - E10-35**

SHEET TITLE:
**RITC
 FRAME ELEVATIONS**

DATE: 04/11/11	SHEET NO: 140
DRAWN BY: HN	RC-S-202
CHECKED BY: D.K.	REV: 0

CLEAN Agency
 We're hiring! Work for CLEAN and Cony's! & 140's free...
 Email: post@cleanagency.com
 URL: http://www.cleanagency.com

04/18/11 09:54 AM C:\WORK\PROJECTS\BOB HOPE AIRPORT\INTERMODAL TRANSPORTATION CENTER\RC-S-202\RC-S-202.dwg



DATE	DESCRIPTION	BY	DATE	DESCRIPTION	BY
04-11-11	ISSUED FOR BID				

Anil Verma Associates, Inc.
444 SOUTH FLOWER STREET, SUITE 1688, LOS ANGELES, CA 90071
PH: (213) 624-3858, Fax: (213) 624-7186
www.anilverma.com

miyamoto.
790 South Flower Street, Suite 1010
Los Angeles, CA 90071
T: (213) 962-7778
miyamoto@miyamoto.com



PROJECT:
**BOB HOPE AIRPORT
REGIONAL INTERMODAL
TRANSPORTATION
CENTER - E10-35**

SHEET TITLE:
**RITC
FLOOR FRAMING DETAILS**

DATE	SHEET No.
04/11/11	RC-S-601
DRAWN BY: MC	170
CHECKED BY: D.K.C.	REV: 0

WHY BUILD THE RITC?

ENVIRONMENTAL VALUE!

- **PRIMARY PURPOSE IS TO REDUCE AIRPORT ENVIRONMENTAL IMPACTS ON THE COMMUNITY**
- **PROMOTES REDUCTION IN TRAFFIC ON CITY STREETS**
- **REDUCES AIR EMISSIONS**
- **PROMOTES PASSENGER USE OF ALTERNATE TRANSPORTATION, INCLUDING TRAINS, BUSES, BICYCLES**
- **SUPPORTS ADDITIONAL ALTERNATE TRANSPORTATION**

WHY BUILD THE RITC?

ENVIRONMENTAL VALUE!

- **CREATES OPPORTUNITIES FOR LOCAL GENERATION OF GREEN ELECTRICAL POWER**
- **REDUCES NEED FOR CONSTRUCTION OF NEW POWER PLANTS**
- **CREATES OPPORTUNITIES FOR PROMOTING USE OF HYBRID ELECTRICAL VEHICLES AND CNG VEHICLES**
- **PROVIDES PARKING TO ENCOURAGE METROLINK AND AMTRAK COMMUTERS**

WHY BUILD THE RITC?

ECONOMIC VALUE!

- **VISITORS TO BURBANK PAY MOST OF THE CONSTRUCTION AND OPERATING COSTS**
- **GENERATES OVER \$300,000 PER YEAR IN POSSESSORY INTEREST TAX RECEIPTS FOR BURBANK**
- **CREATES AN EQUIVALENT OF OVER 600 JOBS DURING CONSTRUCTION**
- **SPENDS A SIGNIFICANT PORTION OF THE \$120,000,000 CONSTRUCTION COST LOCALLY**
- **GENERATES OVER \$1,000,000 IN BUILDING PERMIT/PLAN CHECK FEES**

WHY BUILD THE RITC?

SAFETY VALUE!

- **DESIGNED TO BE OPERATIONAL AFTER MAJOR EARTHQUAKE**
- **WILL BE USED AFTER CATASTROPHE AS SOUTHERN CALIFORNIA MAJOR RESPONSE CENTER FOR PERSONNEL AND MATERIAL**
- **EMERGENCY POWER, COMMUNICATIONS, FUEL AVAILABLE FOR EMERGENCY RESPONDERS**
- **IMPROVES RUNWAY SAFETY AREA**

